

Typical Arrangement of Instrument Transformers and
 Mounting for Installation in Instrument Transformer Cabinet
 3 Phase, 4 Wire, 208Y/120 V or
 3 Phase, 4 Wire, Delta 240/120 V
 1200 A Maximum

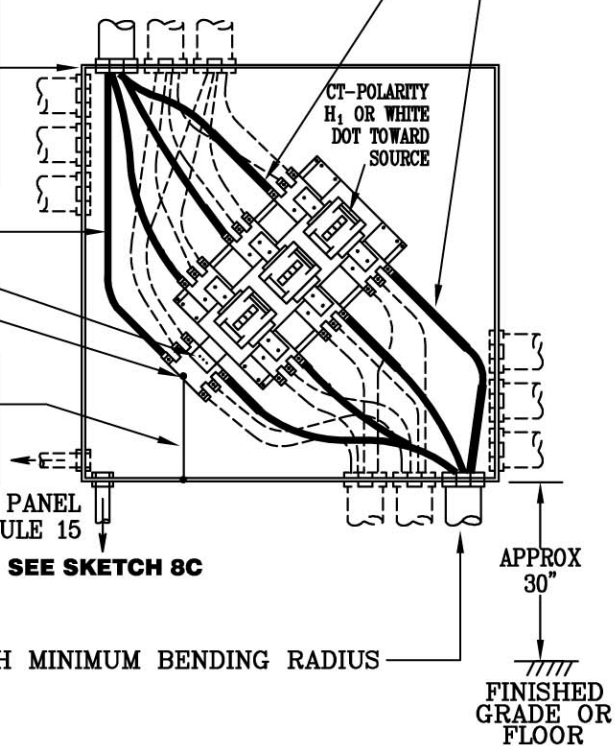
SKETCH #14
 SHEET 1

SKETCH #14
 SHEET 1

THIS CONDUCTOR OF 3 PHASE, 4 WIRE, DELTA
 CONNECTED SERVICE SHALL HAVE THE HIGHER
 VOLTAGE TO GROUND AND BE IDENTIFIED.
 SEE RULE 5 (G)

CUSTOMER FURNISHES, INSTALLS, MAINTAINS:
 SEALABLE METAL CABINET MINIMUM SIZE
 48 INCHES BY 48 INCHES BY 12 INCHES
 (SEE TABLE 3 AND TABLE 4 - APPROVED
 INSTRUMENT TRANSFORMER CABINET)
 AND INSTALLS INSTRUMENT TRANSFORMERS AND
 MOUNTING FURNISHED BY PPL EU MOUNT ON
 45° ANGLE TO ELIMINATE SHARP BENDS IN
 CABLES. GROUP CONDUITS IN CORNER OF CABINET.

NEUTRAL
 TERMINAL FOR METERING NEUTRALS
 STUD FOR BONDING JUMPER
CUSTOMER FURNISHES, INSTALLS PPL EU MAINTAINS:
 BONDING JUMPER
 PER NEC ARTICLE 250 - GROUNDING.
 ALL METALLIC CONDUITS MUST BE
 BONDED TOGETHER AND TO THE CABINET.



SEE SKETCH 8C

CONDUITS SHALL HAVE 36 INCH MINIMUM BENDING RADIUS

NOTES:

- A. MAXIMUM AMPACITY OF EACH CT MOUNTING CONNECTOR IS 400 AMPERES. EACH CONNECTOR CAN ACCOMODATE ONE COPPER OR ALUMINUM CONDUCTOR UP TO 750 KCMIL.
- B. MAXIMUM TIGHTENING TORQUE ON THE CT MOUNTING 450 INCH-POUNDS.
- C. REAR ENTRY OF CT CABINETS IS NOT PERMITTED FOR PPL EU CABLES.

RULES FOR ELECTRIC METER AND SERVICE INSTALLATIONS PPL ELECTRIC UTILITIES CORPORATION	Rules: 5, 13, 15 Date: 9/17/08 Engr: MDB	REMSL_S014.dwg
---	--	----------------