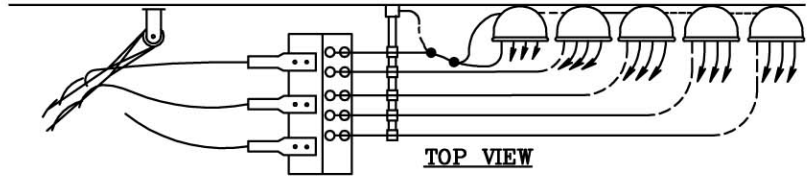


Typical Arrangement of Overhead Instrument
Transformers & Mounting
for Installation in Instrument Transformer Cabinet
3 Phase, 4 Wire, 208Y/120 V or
3 Phase, 4 Wire, Delta 240/120 V
2000 A Maximum
3 Phase, 4 Wire, 480/277 V

SKETCH #14D
SHEET 1

SKETCH #14D
SHEET 1



**CUSTOMER FURNISHES,
INSTALLS, MAINTAINS:**

1. SERVICE ENTRANCE
SEE RULE 5.
2. GROUND CLAMPS.
3. CABLE SUPPORT RACK.
4. LUG CONNECTORS.
SEE DETAIL A OR
SKETCH #49 FOR
ALTERNATIVE
CONNECTORS.

**PPL EU FURNISHES,
INSTALLS, MAINTAINS:**

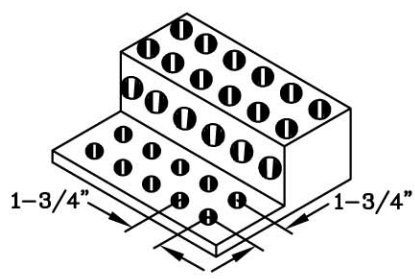
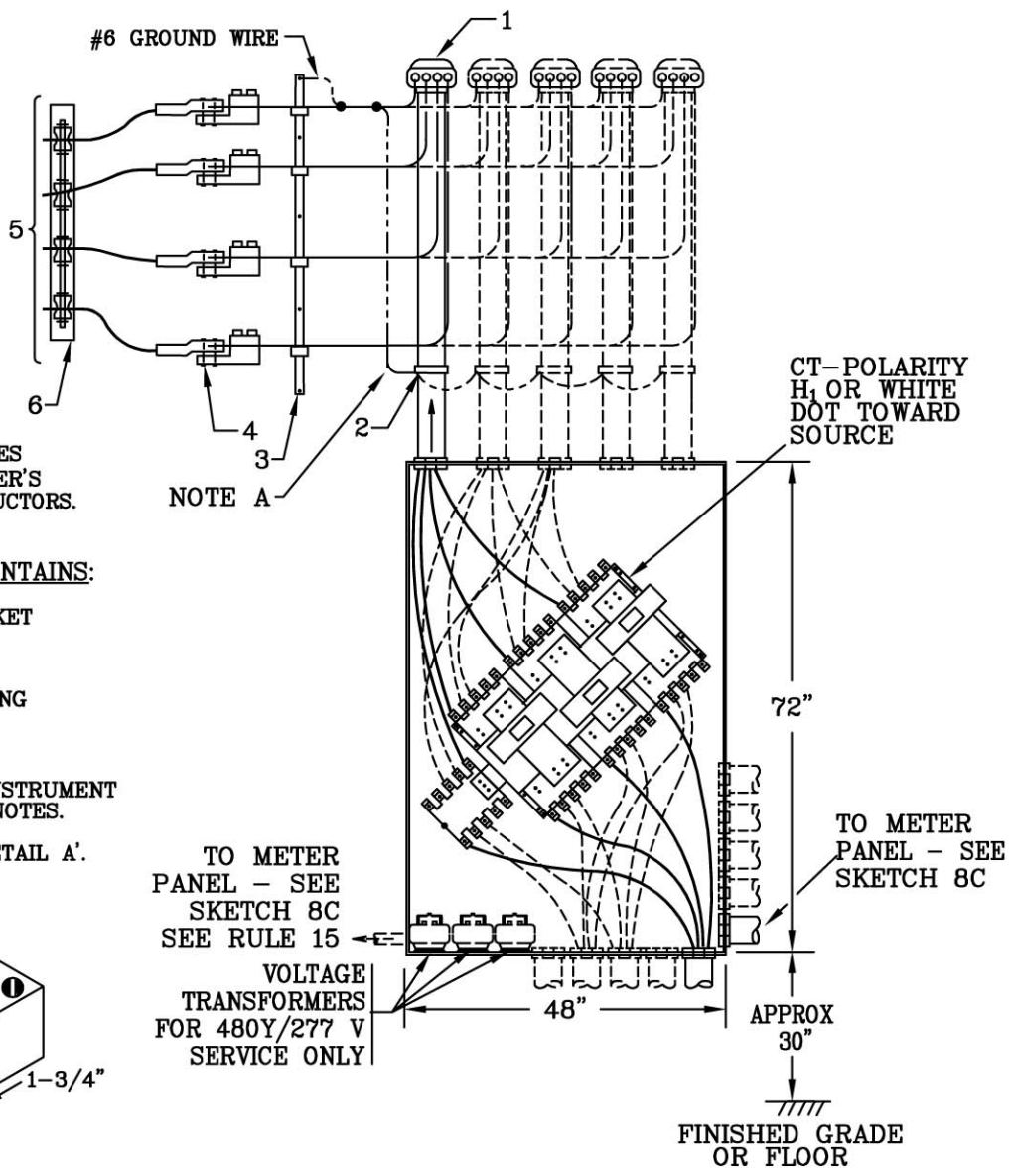
5. SERVICE DROP AND MAKES
CONNECTION TO CUSTOMER'S
SERVICE ENTRANCE CONDUCTORS.

**PPL EU FURNISHES:
CUSTOMER INSTALLS, MAINTAINS:**

6. SERVICE RACK OR BRACKET

NOTES:

- A. PPL EU MAKES GROUNDING
CONNECTION FOR METAL
CONDUIT.
- B. SEE SKETCH 14B FOR INSTRUMENT
TRANSFORMER CABINET NOTES.
- C. SEE SKETCH 49 FOR 'DETAIL A'.



DETAIL A

SKETCH 8C, SKETCH 14B, SKETCH 49

<p>RULES FOR ELECTRIC METER AND SERVICE INSTALLATIONS</p> <p>PPL ELECTRIC UTILITIES CORPORATION</p>	<p>Rules: 5, 13, 15</p> <p>Date: 9/17/08 Engr: MDB</p>
---	--