



Reach Customers and Suppliers from
America's Most Strategic Location



PPL Economic Development
Two North Ninth Street
Allentown, PA 18101-1179
Hotline: 1-800-523-9854
FAX: 610-774-6503
www.ppleconomicdevelopment.com

© 2008 PPL Economic Development

Market Advantages

A proactive business location with room to grow.

Pennsylvania is one of America's most scenic states, with lush mountains, rolling farmland and attractive cities. It is also a fast-growing business location, with excellent proximity to American and Canadian markets, advanced distribution and communications infrastructure, and a large, well-educated work force.

Our professional staff can be your first point of contact with a powerful consortium of partners including state, regional, county and local leaders, real estate agents, and developers.

Use us as a source of high-quality property and demographic information. We'll make you aware of available sites, incentives and programs that can get you up and running faster. Once you're here, PPL's ongoing support helps ensure your company's long-term success.

Access markets quickly and efficiently.

More than 70 million consumers live within a 300-mile radius (480 kilometers) of our region. Within 500 miles (805 kilometers) are four of the nine major U.S. markets, nearly 35 percent of America's population and more than 40 percent of Canada's. Whether your markets are across the country or around the world, you'll reach them quickly and efficiently from central eastern Pennsylvania.

A hard-working, highly productive labor force.

The central eastern region is one of Pennsylvania's fastest developing areas with nearly 2.9 million people. The civilian labor force is more than 1.5 million. Major metropolitan populations include Allentown/Bethlehem/Easton (790,535), Harrisburg/Lebanon/Carlisle (521,812), Scranton/Wilkes-Barre/Hazleton (550,546), Lancaster (490,562), Reading (396,314) and Williamsport (118,395).

Pennsylvanians are dependable employees with a tradition of loyalty, productivity and low absenteeism. Their skills range from manufacturing, general industry and business administration to food processing, science, technology and customer service.

These are just a few reasons why small companies and more than 100 Fortune 500 firms such as Air Products and Chemicals Inc., B. Braun, Dun and Bradstreet, Heinz Pet Products, Hershey's, Kellogg's, Mack Trucks, Merck & Co., Olympus America, Quaker, Sallie Mae, Sanofi Pasteur, Tyson Foods and others reside here.

Sharing our knowledge with business.

Locally, 52 colleges and universities, 32 two-year branch campuses or colleges, and a host of specialized associate-degree-granting institutions turn out graduates with the right work skills and attitudes. You'll also have access to extensive research and development partnerships with Penn State, Lehigh and Princeton Universities and the University of Pennsylvania. Here, industry and academia work together, helping to shape tomorrow's working professionals, new products and technologies.



We're home to one of America's largest rail yards and boast three Class 1 railroads – Norfolk Southern, CSX and Canadian Pacific Railway. Many lines feature double stack service. Amtrak offers passenger service to Philadelphia, New York, Washington, Boston, Pittsburgh and Chicago.

The ports of New York; Philadelphia and Erie, Pa.; and Wilmington, Del., are within one day's drive and equipped to handle chemical, containerized, bulk and refrigerated cargoes.



National and international transportation links.

In the centerfold of this brochure is a map highlighting the region's premier transportation infrastructure for reaching your markets.

More than 45 common carriers provide trucking service at competitive rates. Many offer direct connections to air, rail and sea links. Air travel is provided by seven major airlines and six regional carriers, plus charter, corporate and private aircraft. Three international airports – Harrisburg, Lehigh Valley and Wilkes-Barre/Scranton – offer convenient market access with full U.S. customs service. Philadelphia International and Newark International airports are also within easy reach.



Distance and Driving Time to Major Cities			
City	Miles*	Kilometers*	Hours**
Baltimore, MD	153	246	2.6
Boston, MA	308	496	5.1
Buffalo, NY	353	568	5.9
Charlotte, NC	557	897	9.3
Chicago, IL	730	1175	12.2
Cincinnati, OH	545	877	9.1
Cleveland, OH	401	646	6.7
Detroit, MI	554	892	9.2
Montreal	438	705	7.3
New York, NY	92	148	1.5
Newark, NJ	82	132	1.4
Norfolk, VA	321	517	5.4
Ottawa	401	646	6.7
Philadelphia, PA	62	99.82	1.0
Pittsburgh, PA	282	454	4.7
Toronto	449	723	7.5
Washington, DC	188	303	3.1

*Approximate driving distances from Allentown, Pa.
 **Approximate driving time in hours at 60 mph (96 kmph)

PPL Electric Utilities helps customers manage energy costs.

PPL Electric Utilities delivers electricity to 1.4 million Pennsylvania customers, all of whom may select their electric generation supplier in Pennsylvania's competitive electricity market. PPL Electric Utilities provides tools and options to its customers to help them use energy wisely and manage their energy costs. PPL Electric Utilities' dedicated staff is helping businesses understand their generation supply options so they can make choices that best fit their needs. To learn more, visit the Web site, www.pplelectric.com.

Professional plant location services from PPL.

PPL Economic Development can help you to choose from nearly 1,000 available sites or buildings to simplify your location process. Our comprehensive, searchable online database covers nearly two-thirds of Pennsylvania. Our services are available to you at no cost or obligation and in the strictest of confidence.

We can further smooth the way to your location by providing a vital link to a network of state, regional, county and local leaders, real estate agents and developers. And PPL's regional community relations directors provide vital links to local contacts and are versed in economic development issues.

All of the advantages your company needs are here, surrounded by a beautiful region with four seasons, year-round recreation, history, culture and lifestyles built on community commitment.

Put our energies to work for you.

Let us help your company find the ideal location. PPL and our partners will work with you in complete confidence, with no obligation on your part.

Our available property database is the most comprehensive in Pennsylvania. You can search nearly 1,000 properties in our 29-county service area and pull maps, photos, floor plans and demographics right from our Web Site.

Visit us right now at www.ppleconomicdevelopment.com

Demographic Profile

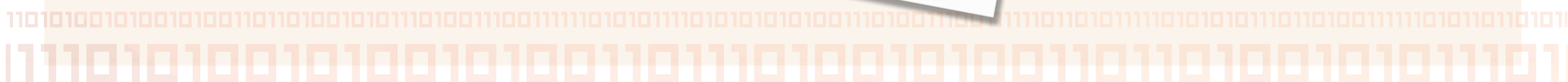
	Central Eastern Pennsylvania	Allentown/Bethlehem/Easton MSA	Harrisburg/Carlisle MSA	Lancaster MSA	Reading MSA	Wilkes-Barre/Scranton/Hazleton MSA	Williamsport MSA
Population ¹	2,868,164	790,535	521,812	490,562	396,314	550,546	118,395
Civilian Labor Force ²	1,505,460	415,560	282,598	267,346	201,584	279,370	59,002
Employment	1,438,643	396,213	271,856	257,714	192,563	264,477	55,820
Unemployment	66,817	19,347	10,742	9,632	9,021	14,893	3,182
Unemployment Rate		4.7%	3.8%	3.6%	4.5%	5.3%	5.4%
Labor Force Participation Rate ³ (BOTH)		63.9%	64.8%	67.8%	65.3%	58.7%	61.3%
Male		71.5%	70.9%	76.9%	72.7%	66.5%	68.1%
Female		56.9%	59.1%	59.4%	58.4%	51.8%	55.0%
Per Capita Personal Income ⁴		\$33,808	\$35,188	\$32,638	\$31,655	\$30,547	\$28,034

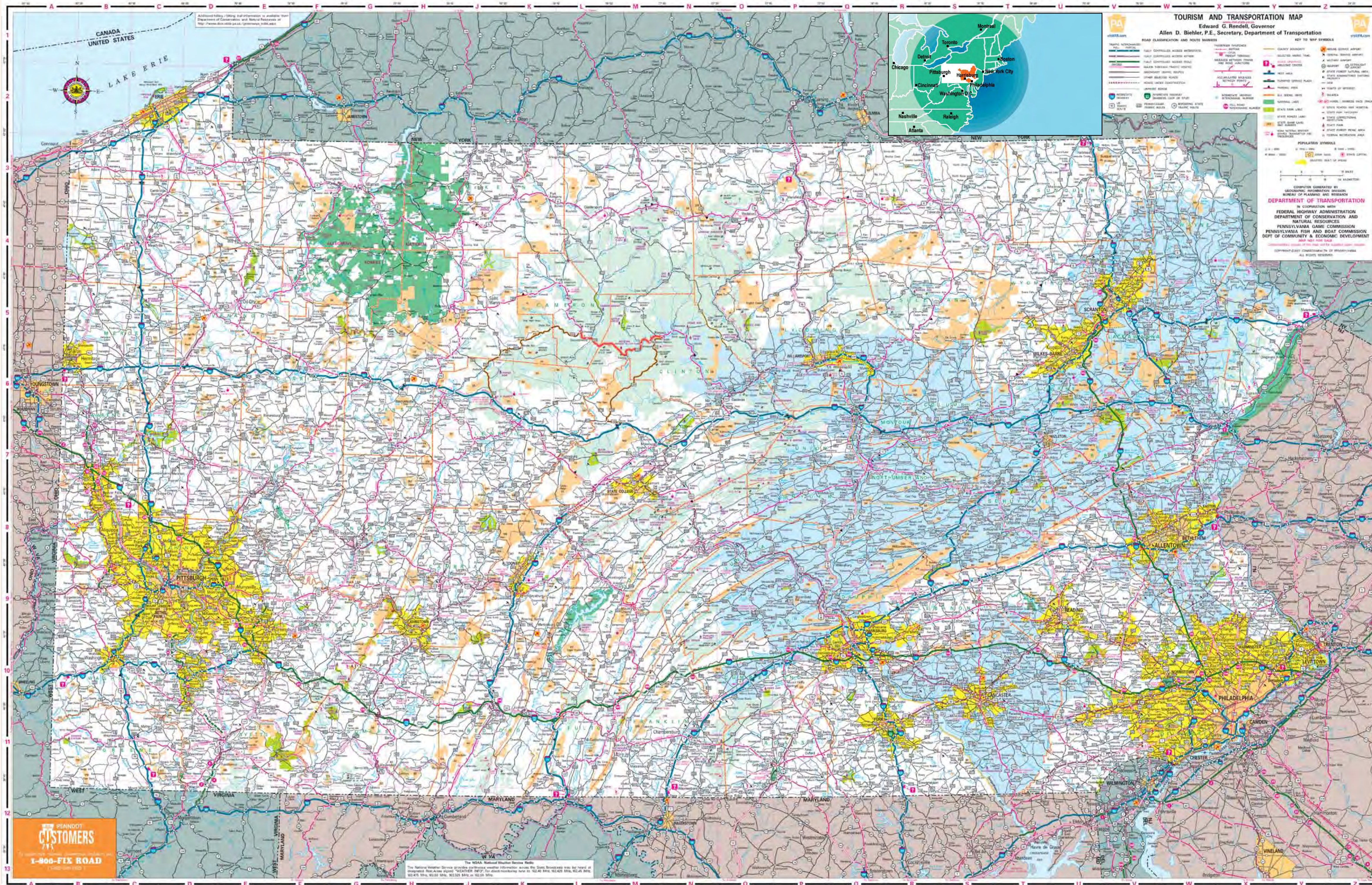
¹Source: State and Metropolitan Area Data Book 2006 - U.S. Census

²2006 Employment Statistics not seasonally adjusted. U.S. Department of Labor, Bureau of Labor Statistics. Advanced Search at <http://www.bls.gov>

³Pennsylvania Department of Labor & Industry, Research Department, Centers for Workforce Information and Analysis. Calculated using population and labor force data from 2000 Decennial Census.

⁴BEA Regional Economic Accounts, <http://www.bea.gov/regional/bearfacts/>





Service Territory

PPL Electric Utilities



Major Highways		
Interstate Routes	78	84
	80	180
	81	380
	83	99
Pennsylvania Turnpike	76	476
U.S. Routes	11	30
	15	220
	22	222

Air Service

Harrisburg International Airport

10,000-foot runway, U.S. Port of Entry and Landing Rights (U.S. Customs Service).

Over 100 flights daily. Convenient, affordable parking. 7 major airlines: US Airways, United Airlines, Delta Air Lines, Northwest Airlines, American Eagle, Continental Airlines and Air Canada. General aviation services and charter services available.

Lehigh Valley International Airport

Two runways for a total of 13,397 feet, U.S. Port of Entry and Landing Rights (U.S. Customs Service).

Over 60 flights daily. Convenient and affordable parking. 38 daily nonstop and same-jet departures. 7 major airlines: Air Canada, Continental Express, Delta, Northwest Airlines, United Express, US Airways and Allegiant Air. General aviation and charter services available.

Wilkes-Barre/Scranton International Airport

A 7,500-foot commercial runway and a 4,300-foot general aviation runway, U.S. Port of Entry and Landing Rights (U.S. Customs Service).

5 major airlines: Northwest Airlines, US Airways, Continental Connection, Delta Connection and United Express. General aviation and charter services available.

Philadelphia International and Newark International Airports

are within easy driving distances. The area also features a number of small regional airports.

Rail Service

Norfolk Southern, Canadian Pacific Railway and CSX Corporation all provide Class 1 rail service. Feeder service is provided by a host of short-line railroads.

Amtrak Passenger Rail service to Philadelphia, New York, Pittsburgh and Chicago.

Trucking Service

More than 45 major carriers provide trucking service with connections to intermodal rail facilities.

