

INSTALLATION INSTRUCTIONS FOR CUSTOMER-INSTALLED CONDUIT SYSTEMS ON PPL TERMINAL POLES

Replaces CRS-1005

This specification defines PPL's requirements for conduit arrangement at terminal poles. All details of this specification must be strictly followed. Any deviation must be approved by a PPL engineer. Unapproved deviations are usually costly for the customer to correct and can result in delays or possible refusal to connect service.

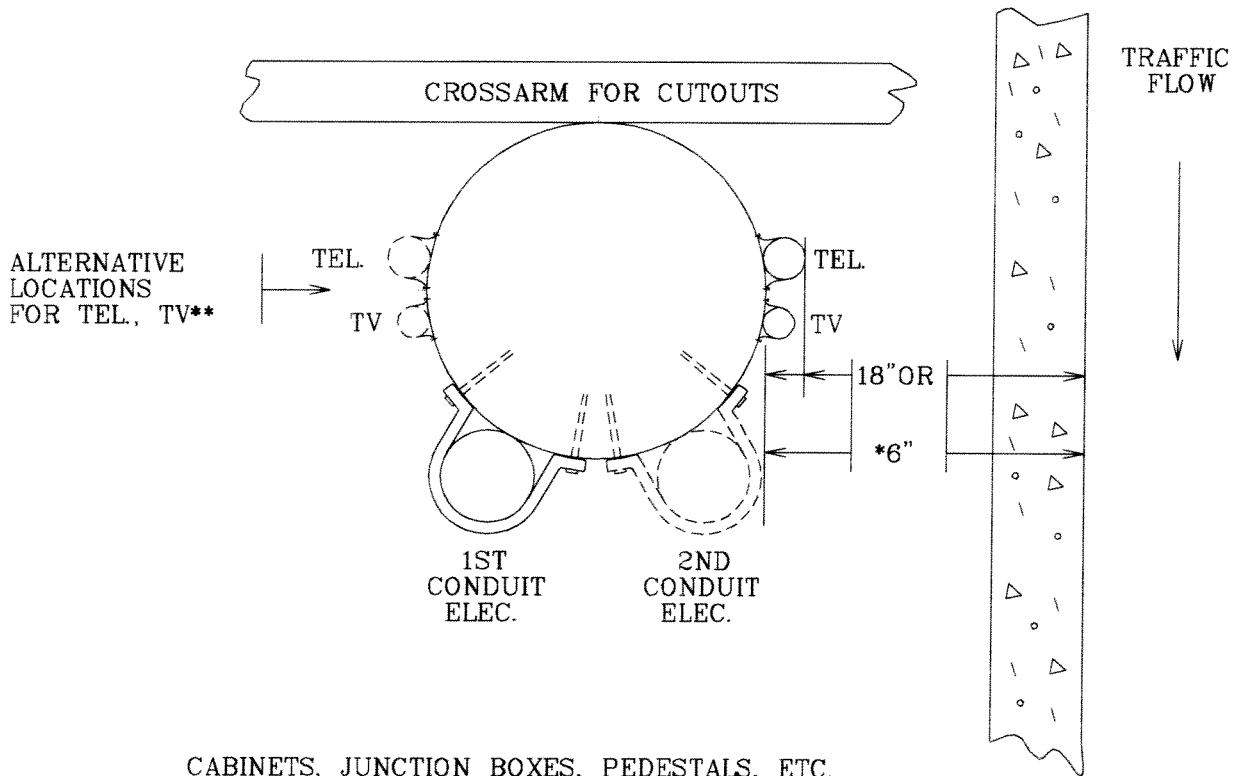
6-18-115_S001.dwg

DISTRIBUTION CONSTRUCTION SPECIFICATIONS
**PPL ELECTRIC UTILITIES
CORPORATION**

Date: 3/31/08 Drafter: RRC
Sponsor: _____
Approved: Mark R. Bernier
Manager - Distribution Maintenance

**RISER ATTACHMENT LOCATION
ON POLES NEAR ROADWAYS
(WITH OR WITHOUT CURB)**

LOCATION MUST BE APPROVED BY PPL



CABINETS, JUNCTION BOXES, PEDESTALS, ETC.
MUST NOT BE ATTACHED TO RISER POLES.

- * ALONG PENNDOT ROADWAYS, 18" MINIMUM IS REQUIRED. AT NEW INSTALLATIONS, 18" MINIMUM IS RECOMMENDED. THE NATIONAL ELECTRICAL SAFETY CODE REQUIRES 6" MINIMUM CLEARANCE TO BOTH THE POLE AND RISER.
- ** TEL & TV RISERS SHOULD BE LOCATED ON SAME SIDE AS THEIR OVERHEAD CABLES ARE ATTACHED.

6-18-115_S002.dwg

DISTRIBUTION CONSTRUCTION SPECIFICATIONS

**PPL ELECTRIC UTILITIES
CORPORATION**

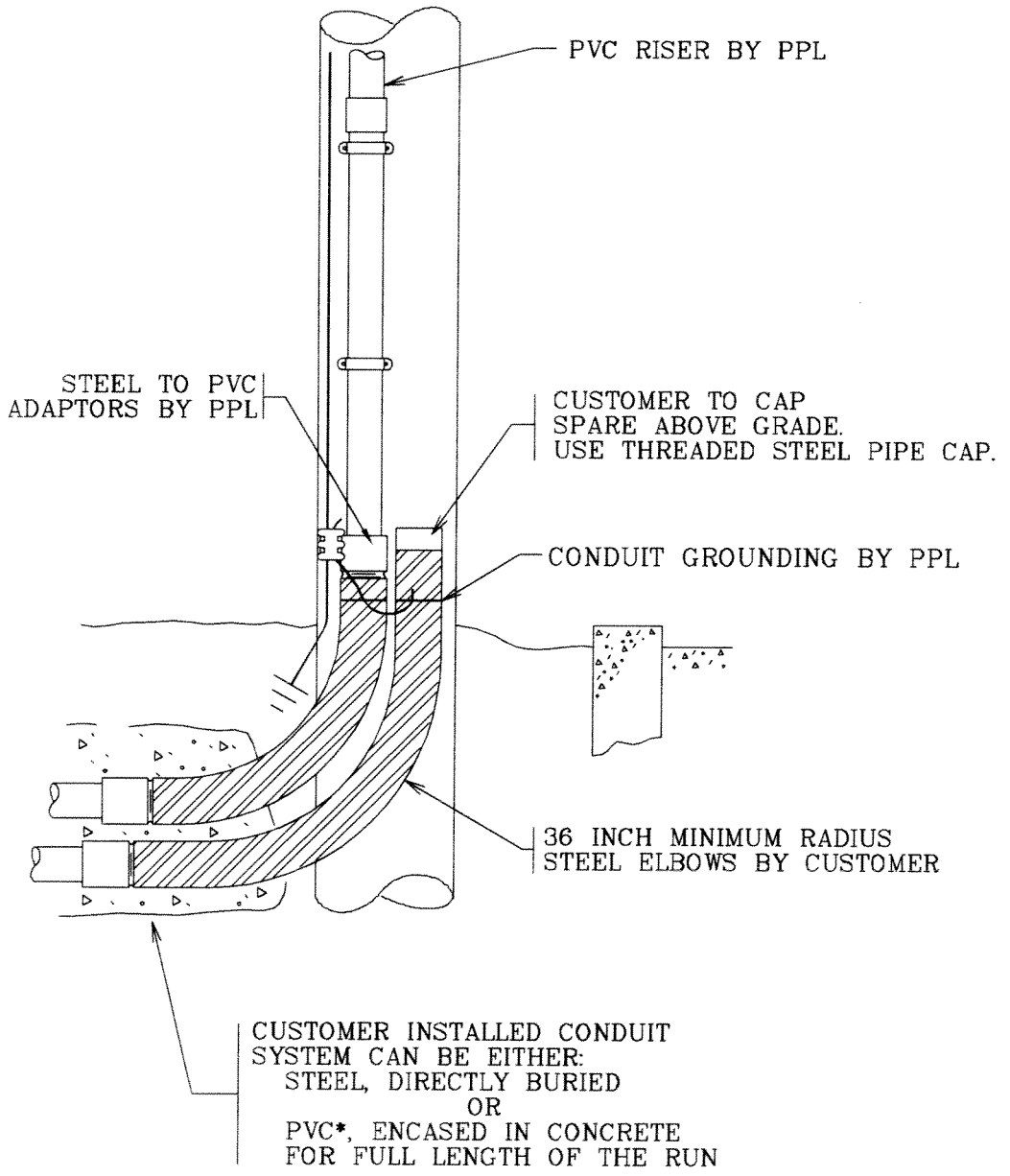
Date: 3/31/08 Drafter: RRC

Sponsor: _____

Approved: _____

Mark R. Barnes
Manager - Distribution Maintenance

TERMINAL POLES AND RISERS
CUSTOMER REFERENCE SPECIFICATION



*TO PREVENT PVC TO STEEL COUPLING FROM BREAKING,
ENCASE LOWER 1/3 OF STEEL ELBOWS IN CONCRETE

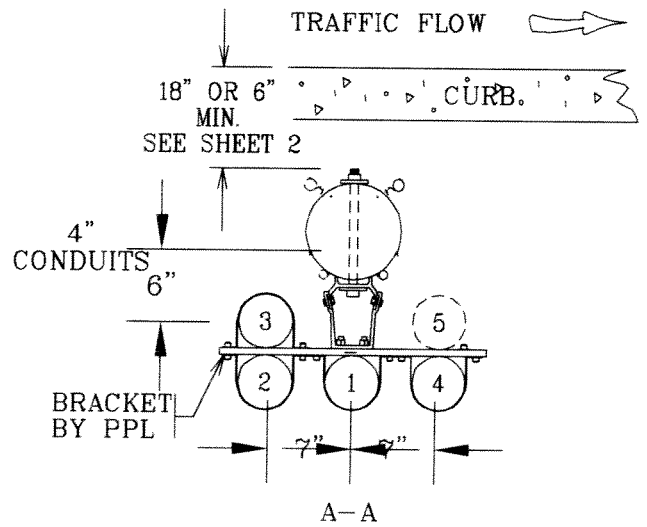
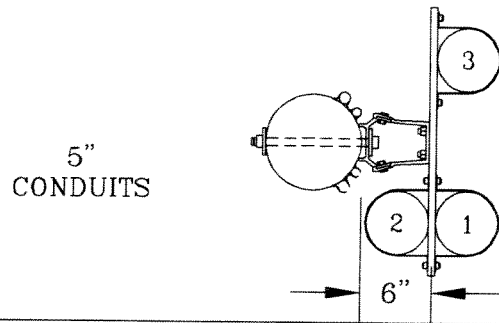
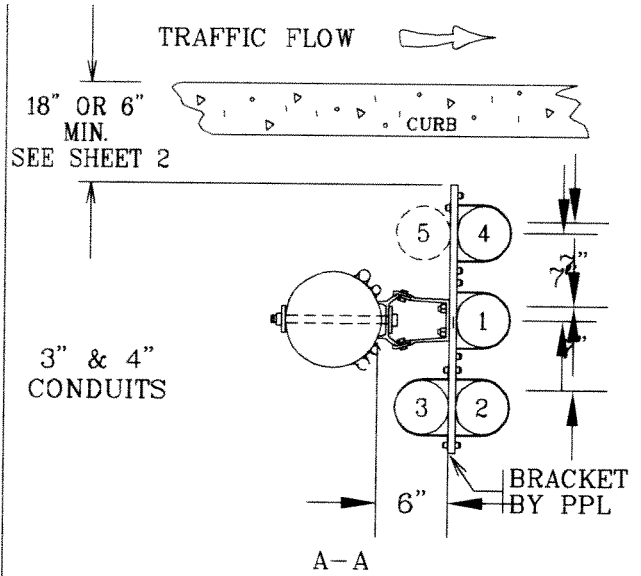
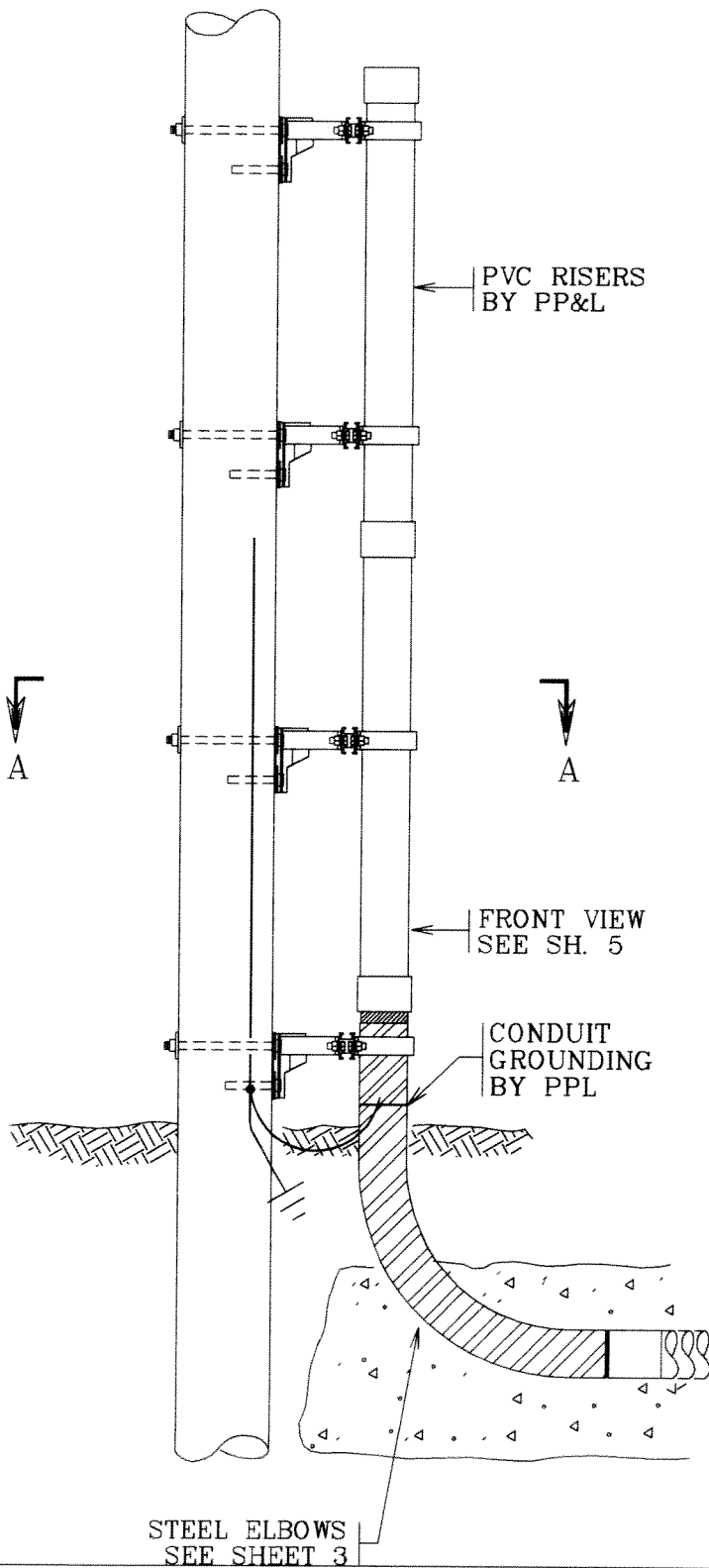
6-18-115_S003.dwg

DISTRIBUTION CONSTRUCTION SPECIFICATIONS PPL ELECTRIC UTILITIES CORPORATION	Date: <u>3/31/08</u> Drafter: <u>RRC</u>
	Sponsor: _____ Approved: <u>Mark C. Benjes</u> Manager - Distribution Maintenance

TERMINAL POLES AND RISERS

CUSTOMER REFERENCE SPECIFICATION

INSTALLATION OF 4 OR 5 RISERS FOR UNDERGROUND SERVICE FROM OVERHEAD TRANSFORMER BANK



ALTERNATE WHEN EXISTING POLE IS LOCATED AT MINIMUM DISTANCE FROM FACE OF CURB.

6-18-115_S004.dwg

DISTRIBUTION CONSTRUCTION SPECIFICATIONS

PPL ELECTRIC UTILITIES CORPORATION

Date: 3/31/08 Drafter: MAF

Sponsor: _____

Approved: _____

Mark R. Bomer
Manager - Distribution Maintenance

TERMINAL POLES AND RISERS

CUSTOMER REFERENCE SPECIFICATION

INSTALLATION OF 3, 4, OR 5 RISERS FOR UNDERGROUND SERVICE FROM OVERHEAD TRANSFORMER BANK

