

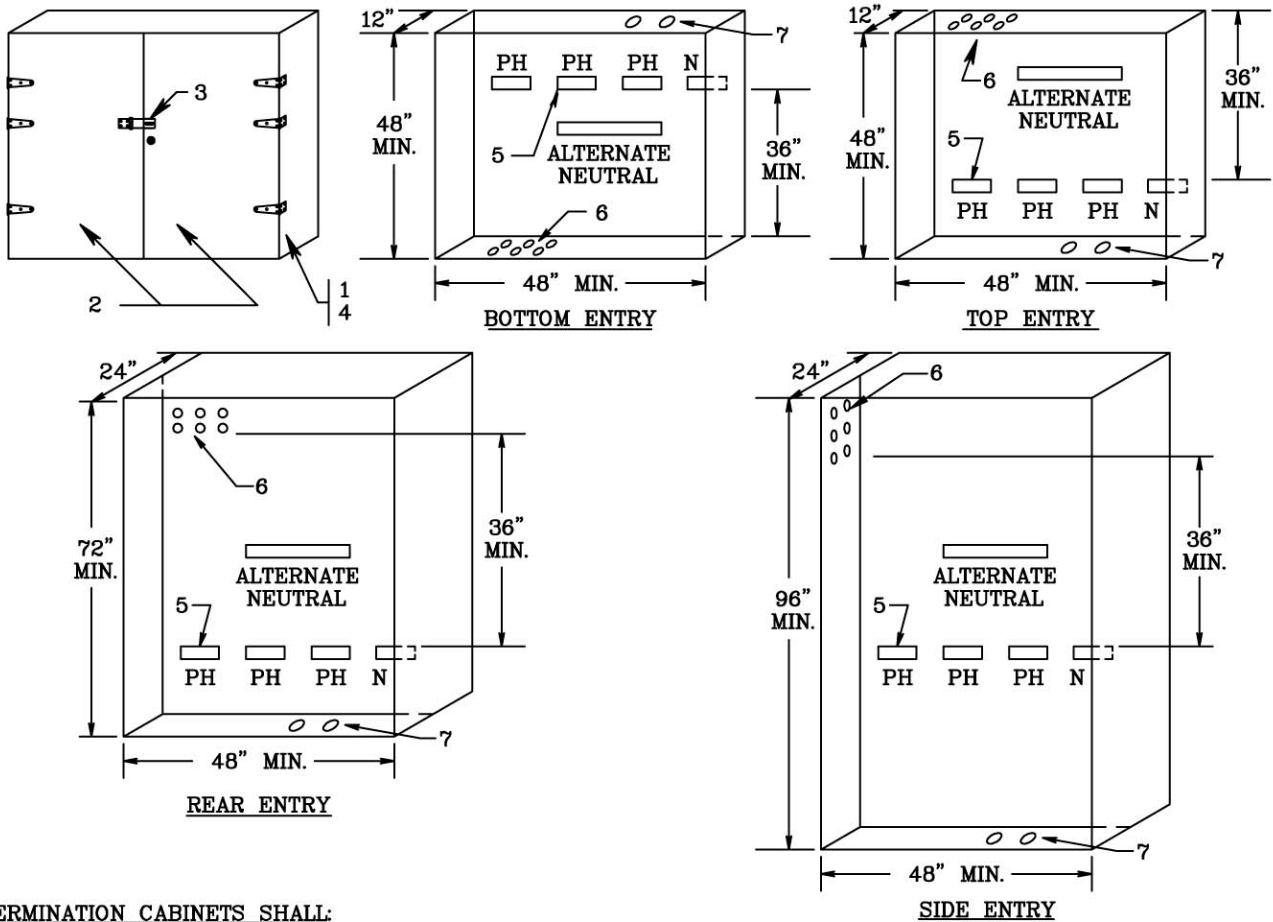
Termination Cabinet - All Service Entries  
 Single Phase or Three Phase  
 120/208 V or 120/240 V  
 2 to 6 Sets of Cable

SKETCH #54

SHEET 54

SKETCH #54

SHEET 54



TERMINATION CABINETS SHALL:

- 1 - BE CONSTRUCTED OF GALVANNEALED STEEL OR GALVANIZED STEEL WITH GRAY ENAMEL FINISH OR COLD ROLLED STEEL WITH A UL RECOGNIZED GRAY POWDER COAT FINISH - MINIMUM #14 GAUGE STEEL.
- 2 - HAVE TWO HINGED DOORS WITH INTERNAL STIFFENERS AND WIND LOCKS. HINGES AND HINGE PINS MUST BE NON-REMOVABLE.
- 3 - HAVE A HASP WHICH WILL ACCOMMODATE AT LEAST 1/4 INCH DIAMETER LOCK. A HANDLE KEY LOCK IS NOT ALLOWED.
- 4 - BE TAMPERPROOF AND, IF INSTALLED OUTDOORS, BE WEATHER RESISTANT AND RAINIGHT.
- 5 - HAVE SETSCREW TYPE TERMINALS ACCEPTING UP TO 750 KCML CABLE. NUMBER OF TERMINALS PER PHASE AVAILABLE TO PPL SHALL EQUAL NUMBER OF SERVICE CONDUITS (INCLUDING ANY SPARES). IF COMPRESSION TYPE CABLE-TO-FLAT CONNECTORS SUPPLIED, THE LUGS FOR PPL MUST SHOW THE BURNDY DIE INDEX (SEE SKETCH 49). TERMINAL CLEARANCES: MINIMUM PHASE-TO-PHASE IS 2 INCHES, MINIMUM PHASE TO GROUND IS 1 INCH.
- 6 - GROUP SERVICE CONDUITS FOR PPL SERVICE CABLES. CONDUIT DIAMETERS ARE 3 OR 4 INCHES.
- 7 - HAVE ADEQUATE CONDUITS FOR CUSTOMER'S CABLES TO DISCONNECT DEVICE.

NOTE: WIRES TO PPL TERMINALS AND WIRES TO CUSTOMER'S TERMINALS SHALL NOT INTERMINGLE. PPL CABLES AND TERMINALS MUST REMAIN ACCESSIBLE TO FACILITATE REPLACEMENT OF FAILED CABLES.

RULES FOR ELECTRIC METER AND SERVICE  
 INSTALLATIONS  
**PPL ELECTRIC UTILITIES  
 CORPORATION**

**Rules:** 2, 5, 6, 12, 13, 15, 16, 21  
**Date:** 11/04/04 **Engr:** RPV

REMSL\_S054\_R1.dwg