

Secondary Service
Meter Base Connections for Self Contained Meters

SKETCH #25D

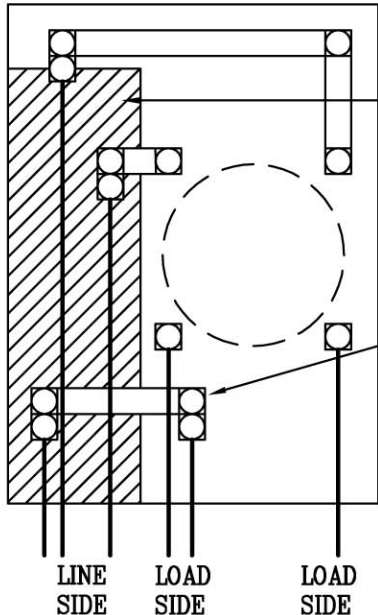
SHEET 1 of 1

SKETCH #25D

SHEET 1 of 1

NOT TO SCALE

VOLTAGE: 1 Phase, 3 Wire 120/240 3 Phase, 4 Wire WYE 120/208V 3 Phase, 4 Wire DELTA 120/240V	SERVICE TYPE: Underground
AMPERAGE: 600 A MAXIMUM	CABINET LOCATION: Indoor Outdoor

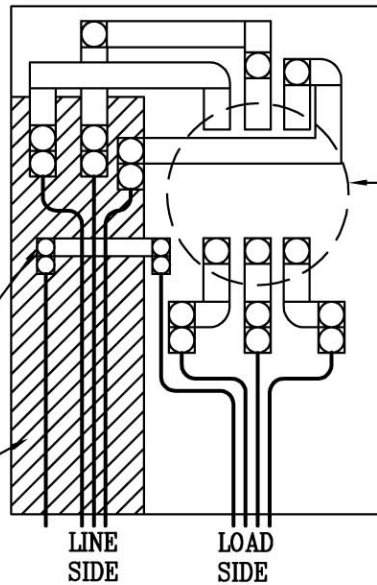


SHADED AREA FOR PPL EU USE ONLY

NEUTRAL

LINE SIDE LOAD SIDE LOAD SIDE

3 WIRE, 1 PHASE, 120/240V
TABLE 1 - APPROVED METER SERVICE DEVICES



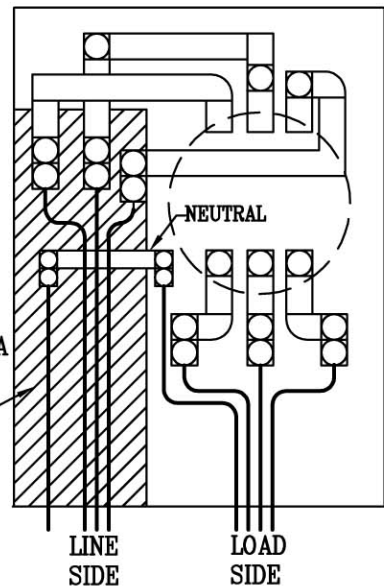
THE CONDUCTOR WITH HIGHER VOLTAGE TO GROUND MUST BE INSTALLED IN RIGHT HAND POSITION OF THE METERBASE AND MUST BE IDENTIFIED

NEUTRAL

SHADED AREA FOR PPL EU USE ONLY

LINE SIDE LOAD SIDE

4 WIRE, 3 PHASE, 120/240V
TABLE 4 - APPROVED METER SERVICE DEVICES



SHADED AREA FOR PPL EU USE ONLY

NEUTRAL

LINE SIDE LOAD SIDE

4 WIRE, 3 PHASE, 120/208V
TABLE 4 - APPROVED METER SERVICE DEVICES

RULES FOR ELECTRIC METER AND SERVICE INSTALLATIONS
PPL ELECTRIC UTILITIES CORPORATION

Rules: 5, 10, 12, 14, 16, 20

Date: 4/30/10 **Engr:** MDB