

Typical Arrangement of Instrument Transformers & Mounting  
for Installation in Instrument Transformer Cabinet

3 Phase, 4 Wire, 208Y/120 V or  
3 Phase, 4 Wire, Delta 240/120 V  
2000 A Maximum

SKETCH #14B

SHEET 1

SKETCH #14B

SHEET 1

THIS CONDUCTOR OF 3 PHASE, 4 WIRE, DELTA  
CONNECTED SERVICE SHALL HAVE THE HIGHER  
VOLTAGE TO GROUND AND BE IDENTIFIED.  
SEE RULE 5 (G)

CUSTOMER FURNISHES, INSTALLS, MAINTAINS:  
SEALABLE METAL CABINET  
48 INCHES BY 72 INCHES BY 12 INCHES  
(SEE TABLE 5 AND TABLE 6 - APPROVED  
INSTRUMENT TRANSFORMER CABINET)  
AND INSTALLS INSTRUMENT TRANSFORMERS AND  
MOUNTING FURNISHED BY PPL EU MOUNT ON  
45° ANGLE TO ELIMINATE SHARP BENDS IN  
CABLES. GROUP CONDUITS IN CORNER OF CABINET.

NEUTRAL  
FILLER BARS PROVIDED BY PPL EU  
INSTALLED BY CUSTOMER

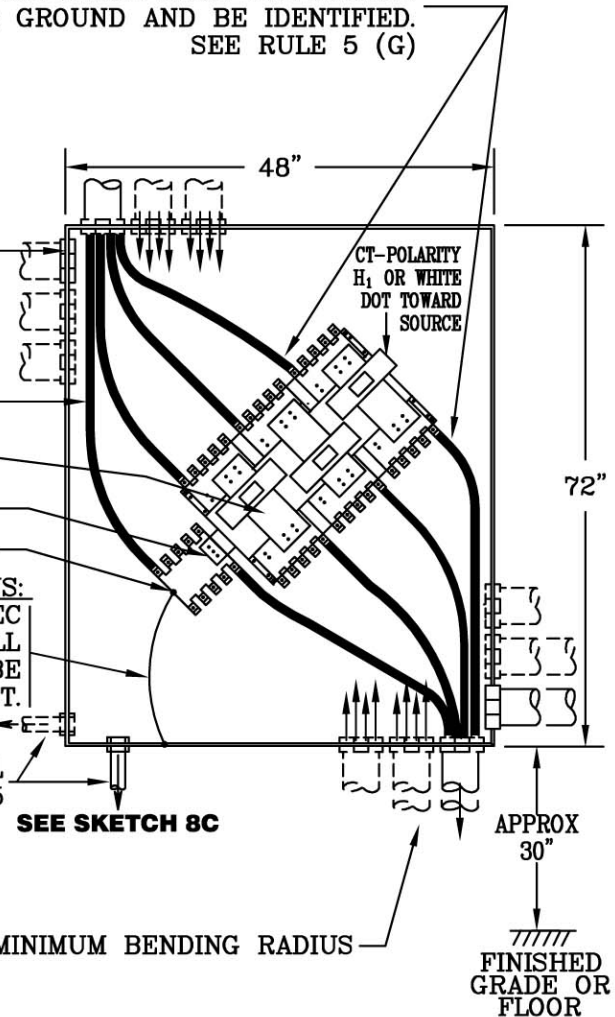
TERMINAL FOR METERING NEUTRALS  
STUD FOR BONDING JUMPER

CUSTOMER FURNISHES, INSTALLS; PPL EU MAINTAINS:  
BONDING JUMPER PER NEC  
ARTICLE 250 - GROUNDING. ALL  
METALLIC CONDUITS MUST BE  
BONDED TOGETHER AND TO THE CABINET.

TO METER PANEL  
SEE RULE 15

SEE SKETCH 8C

CONDUITS SHALL HAVE 36 INCH MINIMUM BENDING RADIUS



NOTES:

- A. MAXIMUM AMPACITY OF EACH CT MOUNTING CONNECTOR IS 400 AMPERES. EACH CONNECTOR CAN ACCOMODATE ONE COPPER OR ALUMINUM CONDUCTOR UP TO 750 KCMIL.
- B. MAXIMUM TIGHTENING TORQUE ON THE CT MOUNTING 450 INCH-POUNDS.
- C. REAR ENTRY OF CT CABINETS IS NOT PERMITTED FOR PPL EU CABLES.

RULES FOR ELECTRIC METER AND SERVICE  
INSTALLATIONS  
**PPL ELECTRIC UTILITIES  
CORPORATION**

**Rules:** 5, 13, 15

REMSL\_S014B.dwg

**Date:** 9/17/08 **Engr:** MDB