

Typical Arrangement of Overhead Instrument Transformers and Mounting for Installation in Instrument Transformer Cabinet

3 Phase, 4 Wire, 208Y/120 V or
3 Phase, 4 Wire, Delta 240/120 V
1200 A Maximum

3 Phase, 4 Wire, 480/277 V

SKETCH #14C

SHEET 1

SKETCH #14C

SHEET 1

CUSTOMER FURNISHES,
INSTALLS, MAINTAINS:

1. SERVICE ENTRANCE
SEE RULE 5.
2. GROUND CLAMPS.
3. CABLE SUPPORT RACK.
4. LUG CONNECTORS.
SEE DETAIL A OR
SKETCH 49 FOR
ALTERNATIVE
CONNECTORS.

PPL EU FURNISHES,
INSTALLS, MAINTAINS:

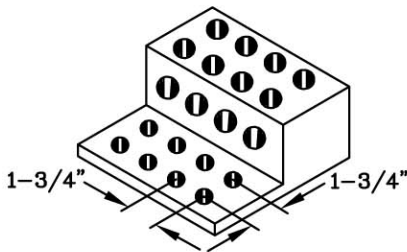
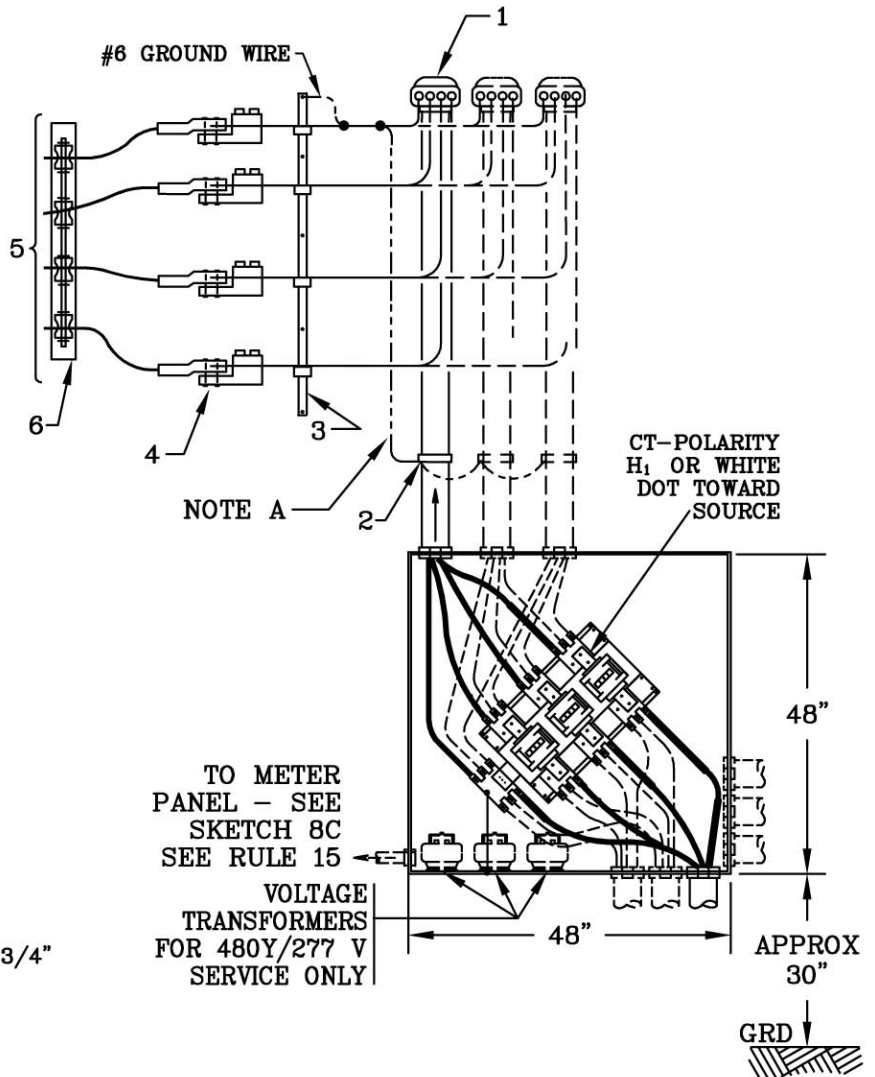
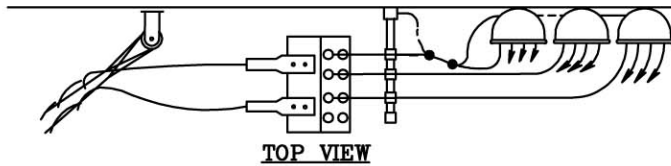
5. SERVICE DROP AND MAKES
CONNECTION TO CUSTOMER'S
SERVICE ENTRANCE CONDUCTORS.
MAXIMUM TENSION PER
CONDUCTOR

PPL EU FURNISHES:
CUSTOMER INSTALLS, MAINTAINS:

6. SERVICE RACK OR BRACKET

NOTES:

- A. PPL MAKES GROUNDING
CONNECTION FOR METAL
CONDUIT.
- B. SEE SKETCH 14 FOR INSTRUMENT
TRANSFORMER CABINET NOTES.
- C. SEE SKETCH 49 FOR 'DETAIL A'.



DETAIL A

SKETCH 8C, SKETCH 44, SKETCH 49

RULES FOR ELECTRIC METER AND SERVICE
INSTALLATIONS
**PPL ELECTRIC UTILITIES
CORPORATION**

Rules: 5, 13, 15

Date: 9/17/08 **Engr:** MDB