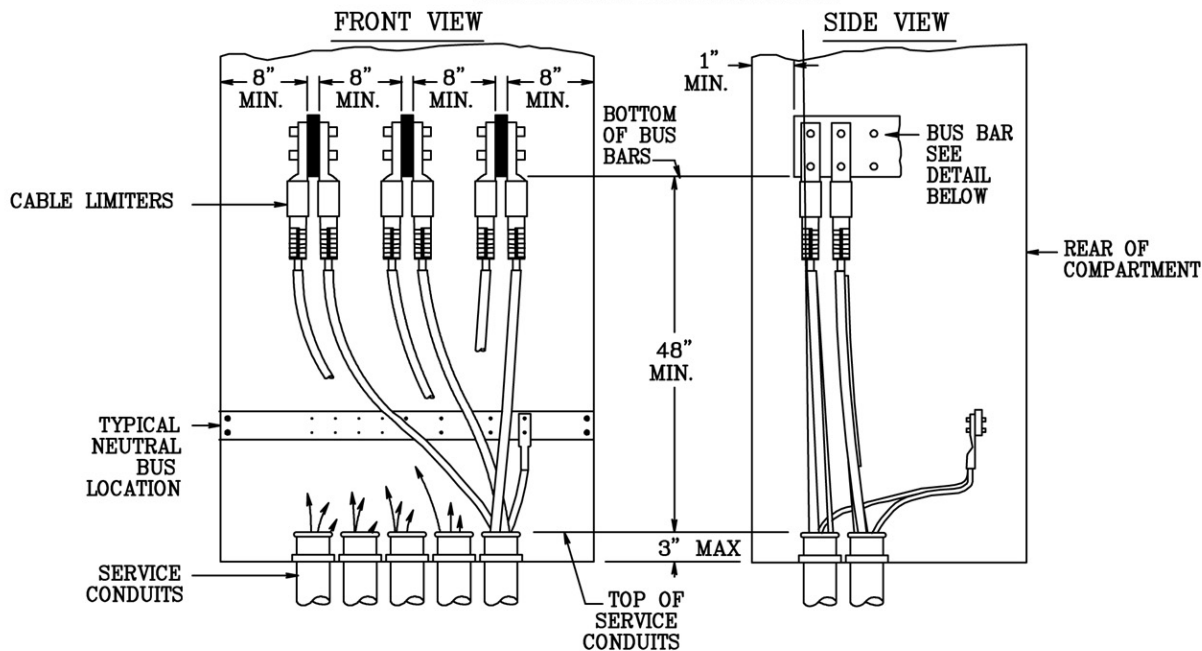


Underground 3 Phase, 4 Wire, 480/277 Volt  
Service Entrance Arrangements

SKETCH #50  
SHEET 50

SKETCH #50  
SHEET 50

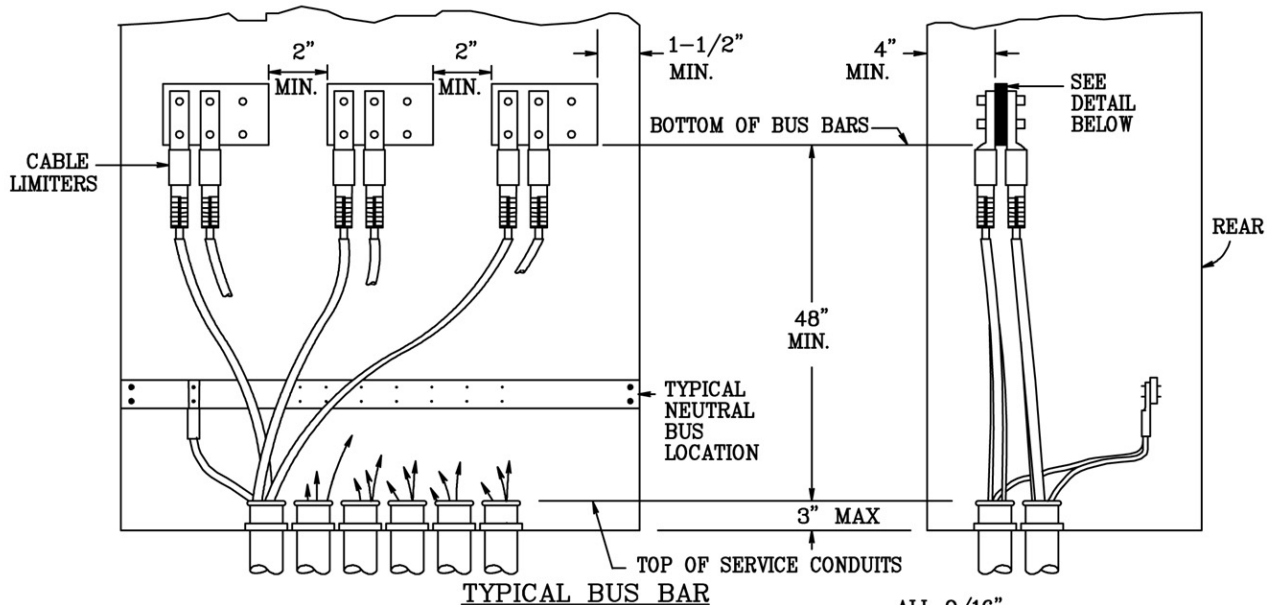
**PREFERRED ARRANGEMENT**



**FRONT VIEW**

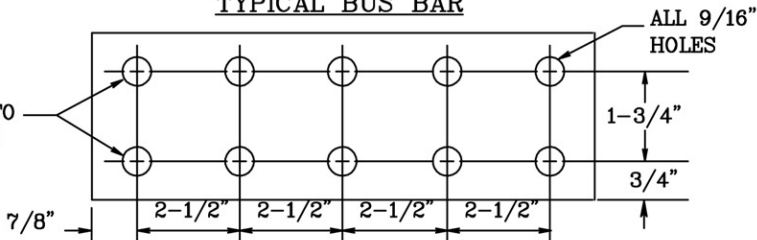
**ALTERNATE**

**SIDE VIEW**



**NOTE:**

BUS BARS MUST BE DRILLED AS SHOWN TO ACCOMMODATE CABLE LIMITERS.



\*REFERENCE CRS 6-19-100

RULES FOR ELECTRIC METER AND SERVICE INSTALLATIONS  
**PPL ELECTRIC UTILITIES CORPORATION**

**Rules: 15**

**Date:** 6/25/04 **Engr:** RPV

REMSI\_S050.dwg