

**Service Drop Attachment and Instrument Transformer
Mounting on Customer's Building
3 Phase, 3 Wire, 480 V**

SKETCH #9
SHEET 9

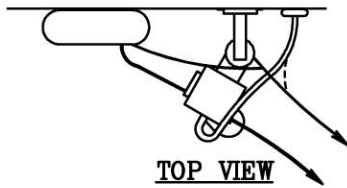
SKETCH #9
SHEET 9

CUSTOMER FURNISHES, INSTALLS, MAINTAINS:

- 1 - SERVICE ENTRANCE
SEE RULE 5.
- 2 - 1-1/4 INCH MINIMUM
CONDUIT AND FITTINGS
BETWEEN INSTRUMENT
TRANSFORMERS AND METER
PANEL REFERENCE
SKETCH 8C.
- 3 - GROUND CLAMPS.

**REQUIRES APPROVAL FROM SUPERVISOR-
METERING SERVICES.**

**NOT FOR NEW
CONSTRUCTION AFTER
5/1/2006.**



PPL FURNISHES,

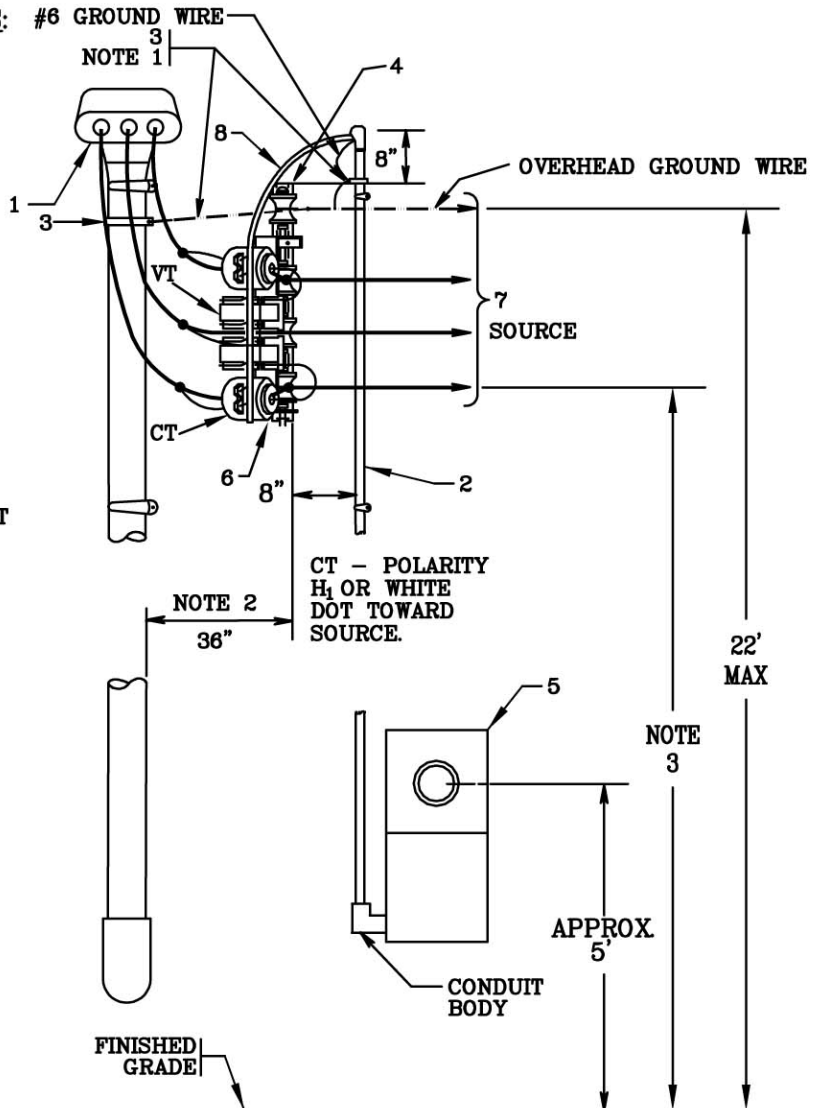
MAINTAINS; CUSTOMER INSTALLS:

- 4 - SERVICE RACK OR
BRACKET.
- 5 - METER PANEL -
LOCATION DESIGNATED
BY PPL REFERENCE
SKETCH 8C.
- 6 - INSTRUMENT TRANSFORMERS
AND MOUNTING.

PPL FURNISHES, INSTALLS,

MAINTAINS:

- 7 - SERVICE DROP AND MAKES
CONNECTION TO CUSTOMER'S
SERVICE ENTRANCE
CONDUCTORS. MAXIMUM
TENSION PER CONDUCTOR -
800 LBS.
- 8 - WIRING BETWEEN INSTRUMENT
TRANSFORMERS AND METER
PANEL.



NOTES:

- 1 - PPL MAKES GROUNDING
CONNECTION FOR METAL
CONDUIT.
- 2 - 36" MINIMUM CLEAR SPACE.
- 3 - SEE RULE 4 FOR MINIMUM
HEIGHT AND SERVICE DROP
CLEARANCE.

REFERENCE PICTURE C

REMSI_S009_R2.dwg

**RULES FOR ELECTRIC METER AND SERVICE
INSTALLATIONS
PPL ELECTRIC UTILITIES
CORPORATION**

Rules: 4, 5, 15

Date: 02/13/06 Engr: RGR