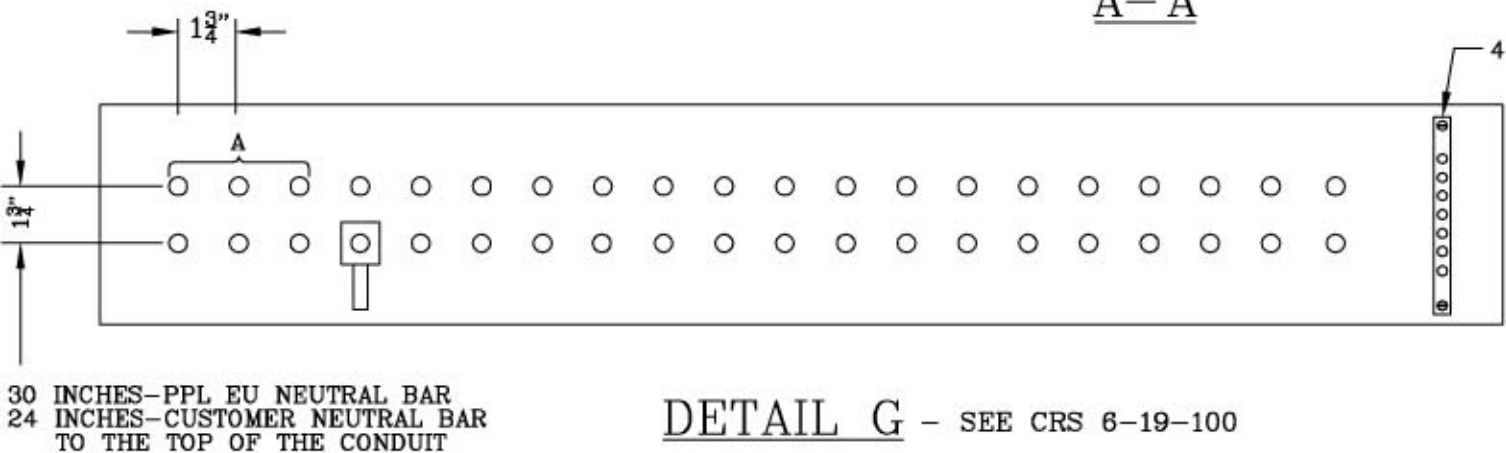
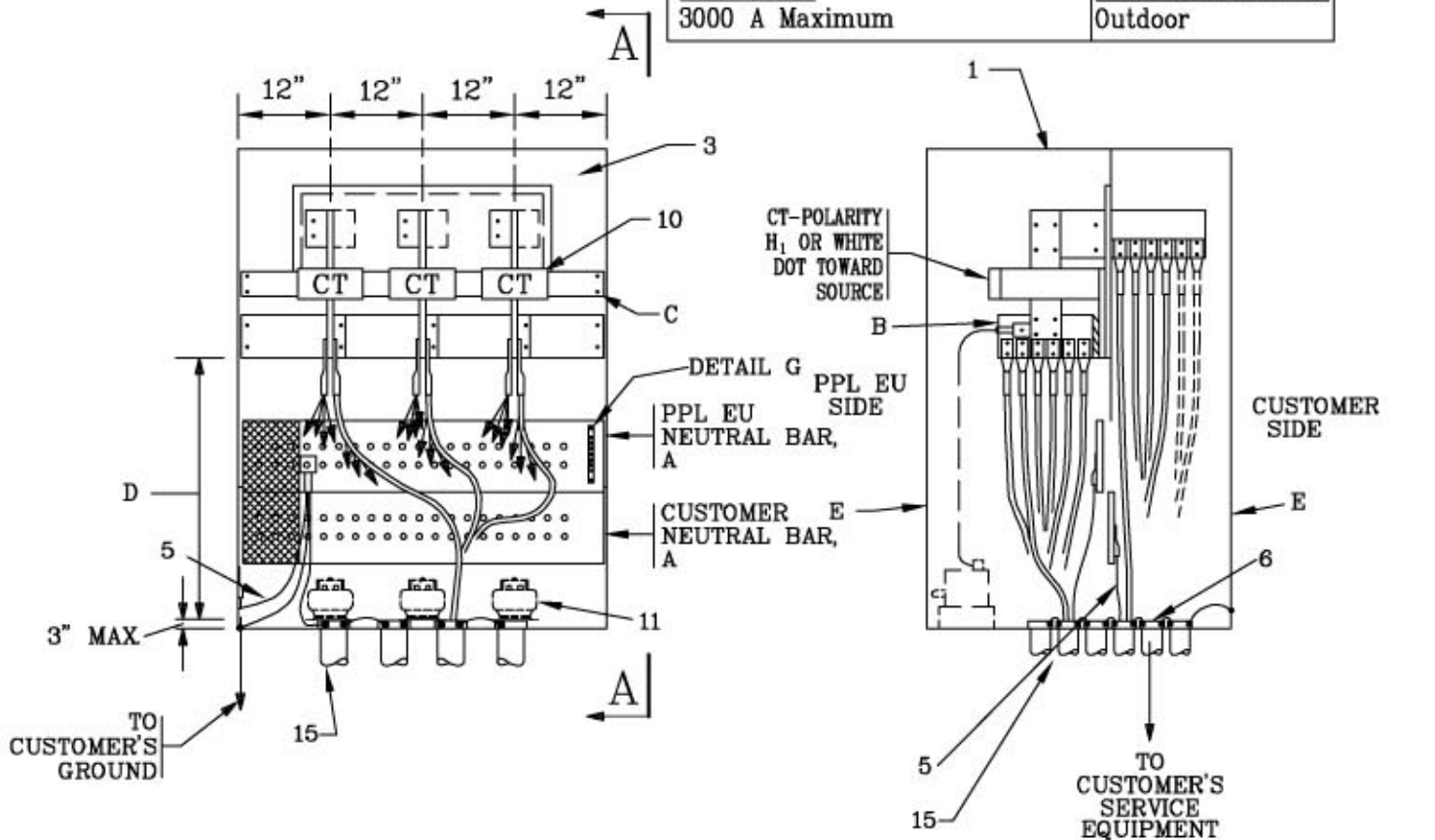


Typical Arrangement of Pad Mounted Metering
and Service Termination Cabinet
Up to Twelve 750 KCMIL (Max) Conductors per Phase

NOT TO SCALE

<u>VOLTAGE:</u> 3 Phase, 4 Wire Wye 120/208V 3 Phase, 4 Wire Wye 277/480V	<u>SERVICE TYPE:</u> Underground
<u>AMPERAGE:</u> 3000 A Maximum	<u>CABINET LOCATION:</u> Outdoor



• REFERENCE: CRS 6-15-180, CRS 6-19-100, SKETCH #8C, SKETCH #8D, SKETCH #20

RULES FOR ELECTRIC METER AND SERVICE
INSTALLATIONS

**PPL ELECTRIC UTILITIES
CORPORATION**

Rules: 5, 13, 15

REMSI_S016AP1.dwg

Date: 8/12/11 **Engr:** MDB