

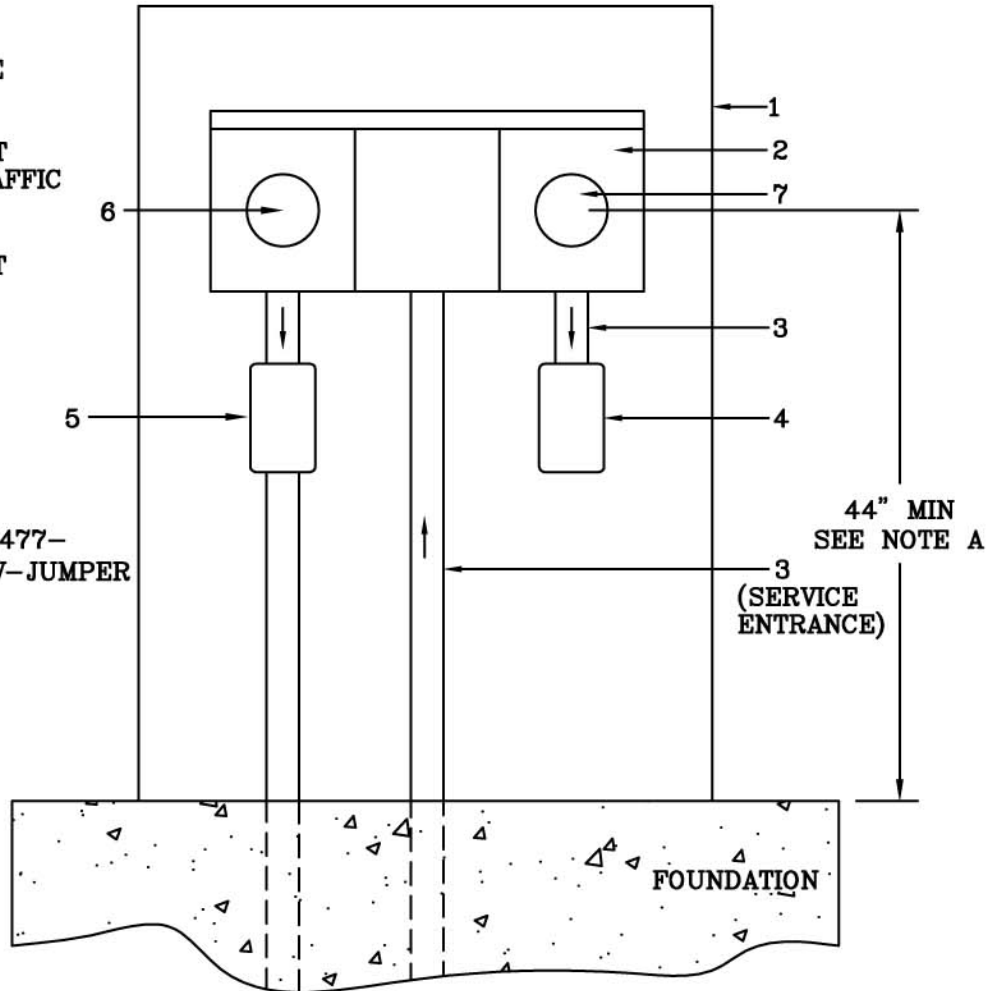
Metered Traffic Signal  
and  
Unmetered Streetlight  
Single Phase 3 Wire 120/240 V

CUSTOMER FURNISHES, INSTALLS, MAINTAINS:

1. CONTROLLER CABINET,  
POLE OR PEDESTAL
2. TWO POSITION  
UNDERGROUND METER BASE  
(100 A PER POSITION)  
WITH CENTER WIRING  
COMPARTMENT (SEE TABLE 5).
3. MINIMUM 3 INCH  
GALVANIZED RIGID  
STEEL OR SCHEDULE  
40 PVC CONDUIT.
4. SERVICE DISCONNECT  
EQUIPMENT FOR TRAFFIC  
SIGNAL
5. SERVICE DISCONNECT  
EQUIPMENT FOR  
STREETLIGHTING.

PPL EU FURNISHES,  
INSTALLS, MAINTAINS:

6. METER SOCKET  
JUMPER COVER  
-PPL EU CAT.# 943477-  
WMS CU - MTR-COV-JUMPER
7. METER



NOTES:

- A. REDUCTION OF MINIMUM HEIGHT REQUIRES APPROVAL OF SUPERVISOR -  
METERING SERVICES.