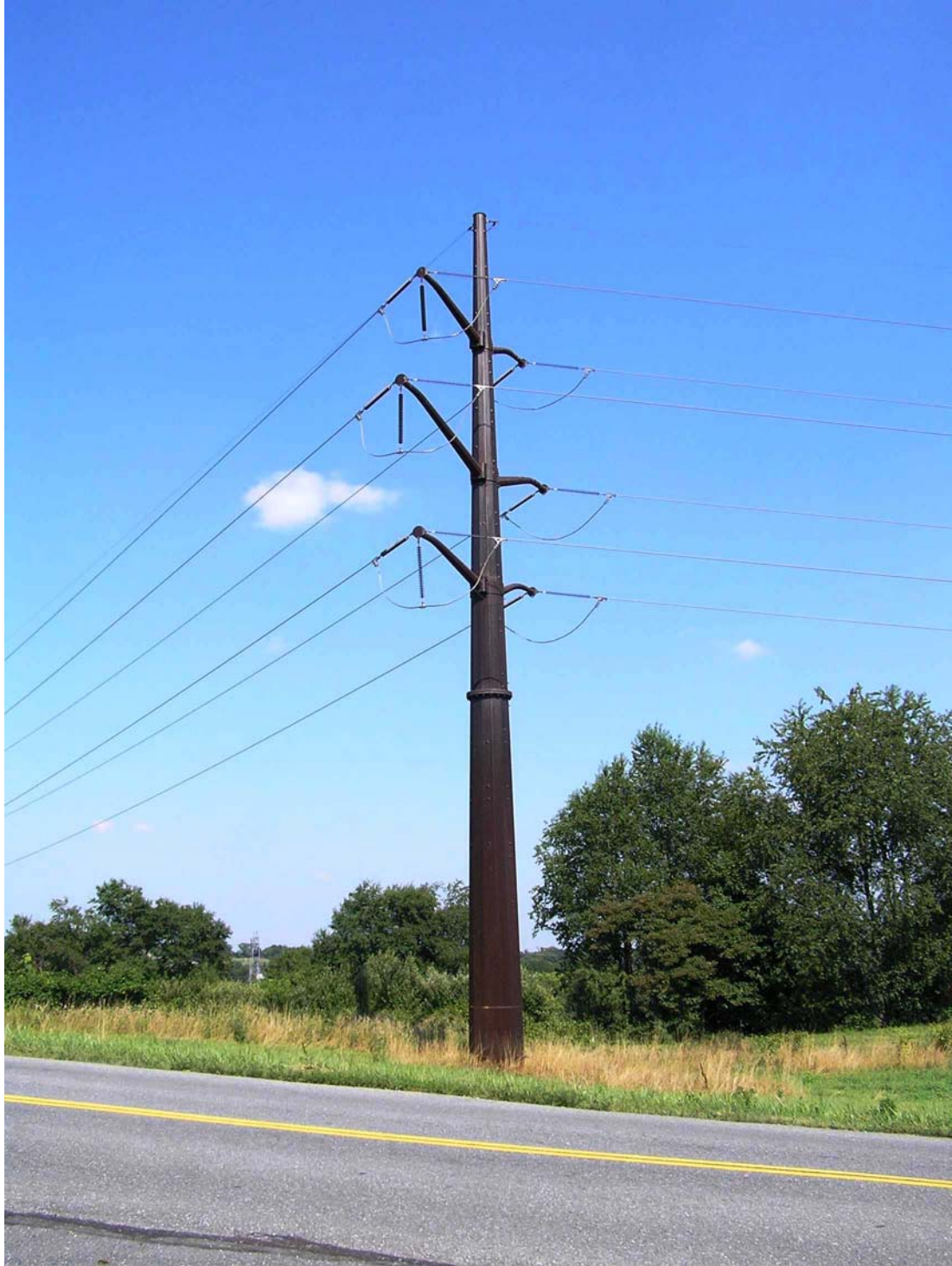


**PROPOSED 138 kV DOUBLE-CIRCUIT  
SELF-SUPPORTING ANGLE STRUCTURE**



**POLE STATISTICS**

Average Height – 85 Feet  
Arm Length (Top & Bottom) – 7 Feet  
Arm Length (Middle) – 11 Feet

Conductor Spacing:  
Overhead Groundwire to Top Phase–12 Feet  
Phase to Phase – 12 Feet

**FIGURE 2**