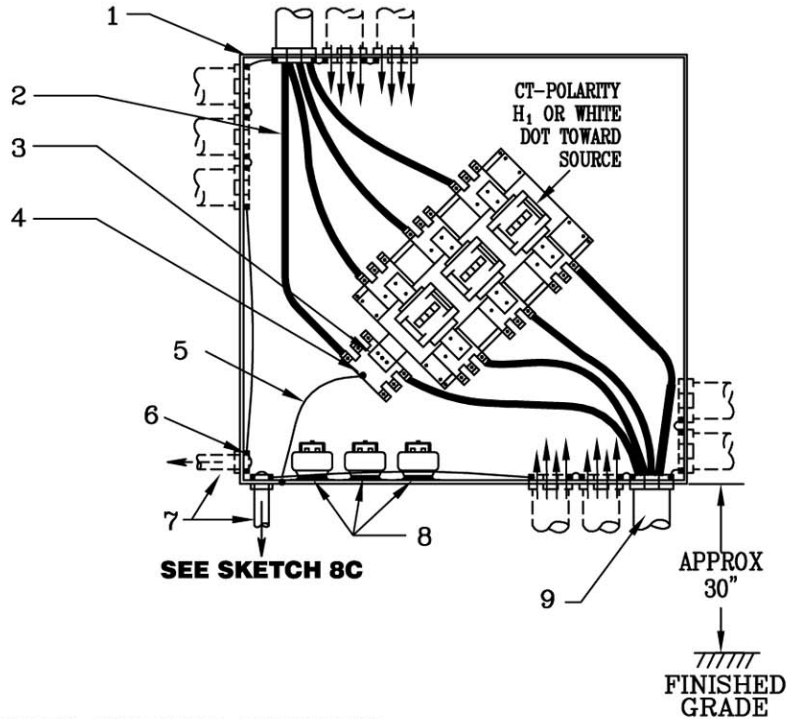


Typical Arrangement of Instrument Transformers & Mounting for Installation in Instrument Transformer Cabinet Underground Service
3 Phase, 4 Wire, 277/480V 800 A Maximum

IF LOAD EXCEEDS 800 AMPERES, SWITCHGEAR OR INSTALLATION PER SKETCH #16A IS REQUIRED.



CUSTOMER FURNISHES, INSTALLS, MAINTAINS

1. SEALABLE METAL CABINET MINIMUM SIZE 48 INCHES BY 48 INCHES BY 12 INCHES (SEE TABLES 3 AND 4 - APPROVED INSTRUMENT TRANSFORMER CABINET) AND INSTALLS INSTRUMENT TRANSFORMERS AND MOUNTING FURNISHED BY PPL EU. MOUNT ON 45° ANGLE TO ELIMINATE SHARP BENDS IN CABLES. GROUP CONDUITS IN CORNER OF CABINET.
2. NEUTRAL
3. TERMINAL FOR METERING NEUTRALS
4. STUD FOR BONDING JUMPER

CUSTOMER FURNISHES, INSTALLS, PPL EU MAINTAINS:

5. BONDING JUMPER PER NEC ARTICLE 250 - GROUNDING.
6. GROUNDING BUSHING SHALL BE ATTACHED TO ALL METAL CONDUITS. THE CONDUITS SHALL BE BONDED TOGETHER, TO THE CABINET AND TO THE NEUTRAL BUS.
7. TO METER PANEL SEE RULE 15
8. VOLTAGE TRANSFORMERS
9. CONDUITS SHALL HAVE 36 INCH MINIMUM BENDING RADIUS

NOTES:

- A. MAXIMUM AMPACITY OF EACH CT MOUNTING CONNECTOR IS 400 AMPERES. EACH CONNECTOR CAN ACCOMODATE ONE COPPER OR ALUMINUM CONDUCTOR UP TO 750 KCMIL.
- B. MAXIMUM TIGHTENING TORQUE ON THE CT MOUNTING WIRE CONNECTION IS 450 INCH-POUNDS.
- C. REAR ENTRY OF CT CABINETS IS NOT PERMITTED FOR PPL EU CABLES.

* REFERENCE SKETCH 8C

<p>RULES FOR ELECTRIC METER AND SERVICE INSTALLATIONS PPL ELECTRIC UTILITIES CORPORATION</p>	<p>Rules: 5, 13, 15 Date: <u>6/24/09</u> Engr: <u>MDB</u></p>
---	--