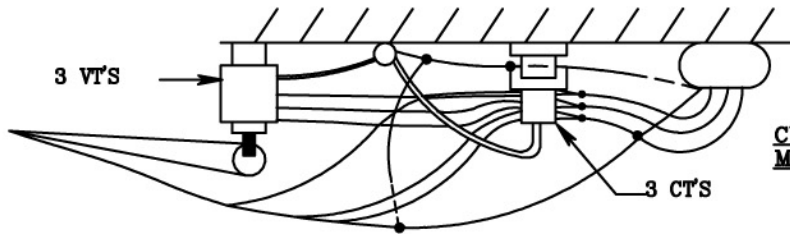


**REQUIRES APPROVAL FROM SUPERVISOR - METERING SERVICES**



**TOP VIEW**

**CUSTOMER FURNISHES, INSTALLS, MAINTAINS:**

1. SERVICE ENTRANCE  
SEE RULE 5.
2. 1-1/4 INCH MINIMUM,  
THREADED GALVANIZED RIGID,  
INTERMEDIATE STEEL, OR SCHEDULE  
40 PVC CONDUIT AND FITTINGS  
BETWEEN INSTRUMENT  
TRANSFORMERS AND METER  
PANEL.
3. GROUND CLAMPS AND WIRE.

**PPL EU FURNISHES, MAINTAINS:  
CUSTOMER INSTALLS:**

4. SERVICE RACKS AND BRACKETS.
5. METER PANEL AT  
LOCATION DESIGNATED  
BY PPL SEE SKETCH 8C.
6. INSTRUMENT TRANSFORMERS AND  
MOUNTING.

**PPL EU FURNISHES, INSTALLS,  
MAINTAINS:**

7. SERVICE DROP AND MAKES  
CONNECTION TO CUSTOMER'S  
SERVICE ENTRANCE CONDUCTORS.  
MAXIMUM TENSION PER CONDUCTOR -  
800 LBS.
8. WIRING BETWEEN INSTRUMENT  
TRANSFORMER AND METER  
PANEL.

**NOTES:**

- A. PPL EU MAKES GROUNDING  
CONNECTION FOR METAL  
CONDUIT.
- B. SEE RULE 4 FOR MINIMUM  
HEIGHT AND SERVICE DROP  
CLEARANCE.

