

How To Read Your New Meter

Some of our customers – particularly those with solar panels – like to obtain account updates by reading their meters.

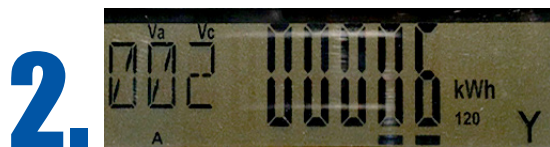
Depending on your meter, you'll see a loop of either **six screens** or **five screens** as it operates. The more common **six-screen** loop is explained below; the **five-screen** loop is described on the other side of this sheet.



1. The first screen – marked with the number 1 – shows you how much energy has been **delivered to your property**.

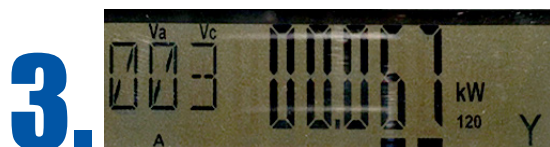
The display does not reset to zero each month. So if you're trying to get a handle on your monthly usage, you'll want to check on the same date each month and subtract the prior month's reading from the latest reading.

(You can also get updates on your energy usage at any time by establishing an online PPL account and logging on at ppllectric.com. You may find this easier.)

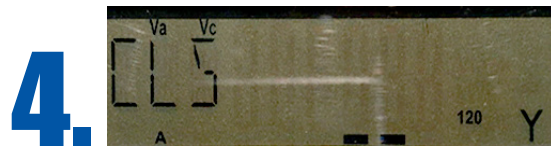


2. The next screen, marked with the number 2, shows you how much energy **your property has delivered to the energy grid** if you have solar panels or another type of generation installation. If you don't have one, this screen will remain at zero.

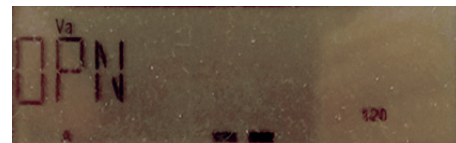
This display also does not reset. So if you're trying to take a monthly reading, you'll want to check on the same date each month and subtract the prior month's reading from the latest reading.



3. The next screen, marked with the number 3, displays your **demand** – a measure of the peak amount of electrical energy your property has consumed at any one time. Unlike other displays, the demand resets each night.



4.



The next screen will say "CLS" if the switch inside the meter is **closed** and power is flowing to the property. It will say "OPN" if the switch is **open** and no power is being delivered. If your account is in good standing, you should always see "CLS."



5.

The next screen will have various values. It is used for troubleshooting communications and can be ignored in most cases.



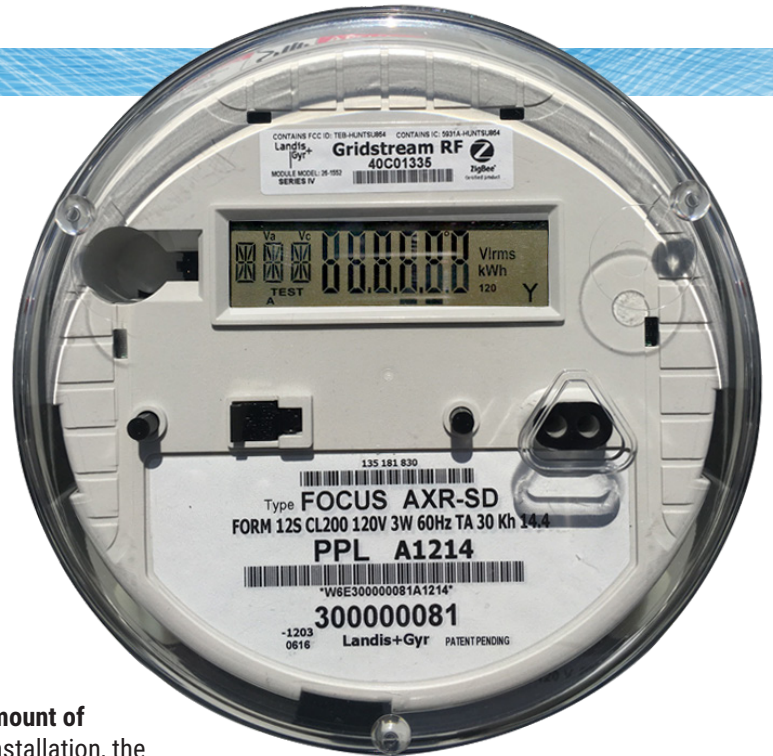
6.

The last screen is simply a test that shows all parts of the display are functioning.



How To Read Your New Meter

Depending on your meter, you'll see a loop of either **six screens** or **five screens** as it operates. The **five-screen** loop is described below; the more common **six-screen** loop is explained on the other side of this sheet.



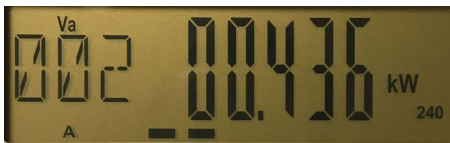
1.



The first screen – marked with the number 1 – shows you the **net amount of energy** that has been delivered to your property. If you have a solar installation, the amount shown on this screen is the amount of energy **delivered to your property** minus the amount of energy your system has **sent to the energy grid**.

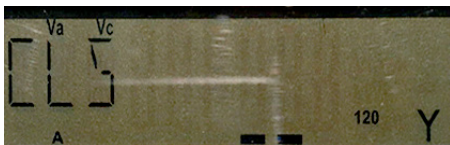
The six-screen loop breaks these items – energy delivered, and energy sent to the grid – onto two screens. We are working to move all customers onto the six-screen display so they can receive more detailed usage information.

2.



The next screen, marked with the number 2, displays your **demand** – a measure of the peak amount of electrical energy your property has consumed at any one time. Unlike other displays, the demand resets each night.

3.



The next screen will say “CLS” if the switch inside the meter is **closed** and power is flowing to the property. It will say “OPN” if the switch is **open** and no power is being delivered. If your account is in good standing, you should always see “CLS.”

4.



The next screen will have various values. It is used for troubleshooting communications and can be ignored in most cases.

5.



The last screen is simply a **test** that shows all parts of the display are functioning.



PPL Electric Utilities