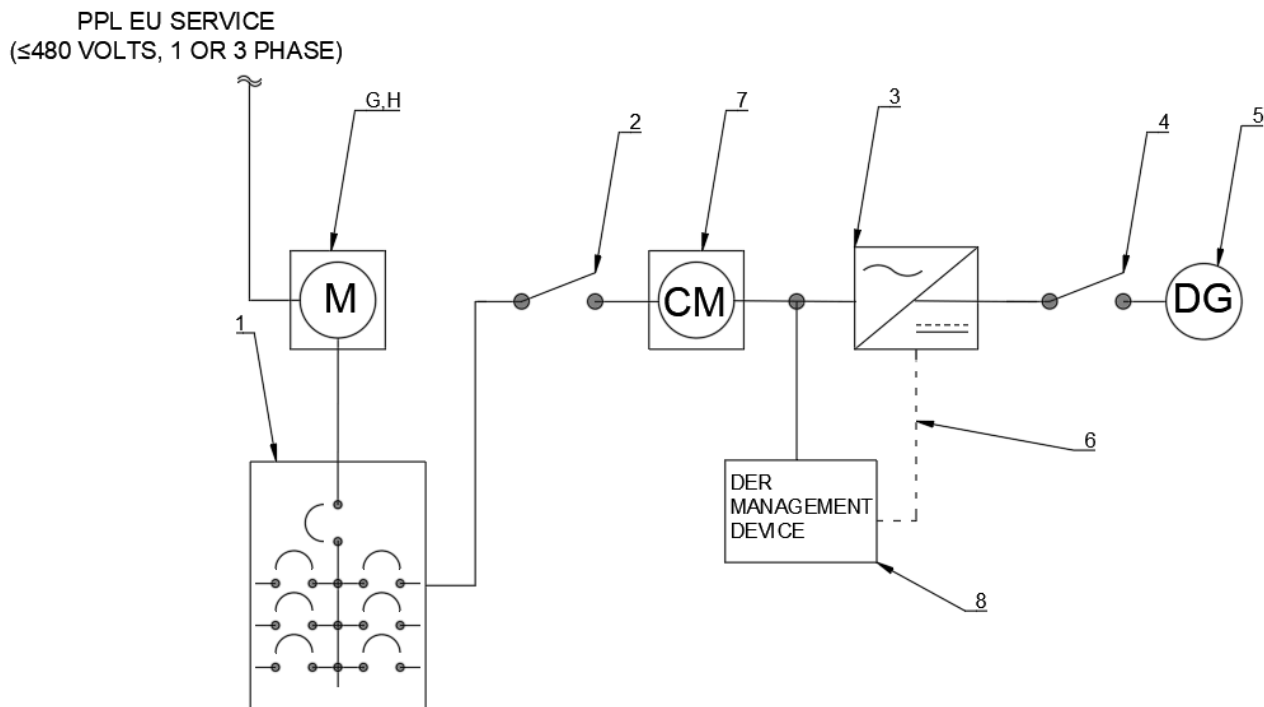


Sketch #57 Inverter-based renewable generation for DG capacity up to and including 20% of the load center bus bar rating for 480V, self-contained metering installations

<u>Voltage/ Phase:</u> 1 Phase, 3 Wire Network 277/480V* 1 Phase, 3 Wire 240/480V* 3 Phase, 4 Wire WYE 277/480V	<u>Amperage:</u> N/A	<u>Inverter Continuous Current</u> N/A
<u>Service Type:</u> Overhead/Underground	<u>Meter Type/Location:</u> Self-contained/Outdoor	<u>Bus Bar Rating:</u> ≤20%

* The maximum parallel connection (generation) permitted on a single-phase installation is 158 kW.

NOT FOR NEW CONSTRUCTION



* Reference: SKETCH 55a

REMSI_S057P1dwg

<p>RULES FOR ELECTRIC METER AND SERVICE INSTALLATIONS</p> <p>PPL ELECTRIC UTILITIES CORPORATION</p>	<p>Rules: 12, 28</p> <p>Date: 01/31/2025 Engr: JEU</p>
--	--

© 2022 PPL Electric Utilities Corporation. All rights reserved. Printed on: 02/05/2025

Approved: E0495 Bash, Christopher R



REMSI Sketches 51-100
Sketch #57
6-52

0000-000-ST-6052
Custom ID: DCS 6-52
Revision: 14
Effective Date: 1/31/2025
Page 23 of 80

CUSTOMER FURNISHES, INSTALLS, MAINTAINS:

1. Load center
2. AC disconnect switch
3. Inverter(s) (includes metering and communication features) inverter shall be labeled as IEEE 1547/UL 1741 listed.
4. DC disconnect
5. Distributed Generation (DG) source
7. Customer's metering (optional)

PPL ELECTRIC FURNISHES, INSTALLS, MAINTAINS

6. Wired communication between PPL DER Management Device and inverter.
8. PPL Electric DER Management Device.

* Reference: SKETCH 55a

REMSI_S057P1dwg

RULES FOR ELECTRIC METER AND SERVICE INSTALLATIONS PPL ELECTRIC UTILITIES CORPORATION	Rules: 12, 28 Date: 01/31/2025 Engr: JEU
--	---

© 2022 PPL Electric Utilities Corporation. All rights reserved. Printed on: 02/05/2025

Business Use
Approved: E0495 Bash, Christopher R



REMSI Sketches 51-100
Sketch #57
6-52

0000-000-ST-6052
Custom ID: DCS 6-52
Revision: 14
Effective Date: 1/31/2025
Page 24 of 80

NOTES:

- A. See PPL Electric customer-owned generation website for more information.
- B. Application for customer-owned, inverter-based renewable generation must be completed. See customer-owned generation applications.
- C. PPL Electric requires an independent electrical inspection. The inspector is required to verify the IEEE/UL listing of the inverter.
- D. Installation must adhere to requirements of the National Electrical Code (NEC) article 690 and article 705.
- E. All labeling must be in accordance with NEC article 690.
- F. In addition to Note D, PPL Electric will install permanent labeling on the meter base (CID 1012171) and pad mount transformer (CID 1012171) or pole top transformer (CID 1013816) upon receipt of inspection.
- G. Metering – 480v self-contained – see self-contained 480v metering series organization map to determine appropriate sketch for service type and size, for metering requirements, and responsibilities. Foreign energy sources shall not be connected directly to metering equipment. See rule 12.
- H. Installations requiring 480v self-contained metering following sketch #71 or sketch #72 requires PPL Electric review and approval.
- I. If a neutral connection exists at the inverter, the inverter neutral shall be connected to the service neutral.
- J. customer shall contact PPL Electric prior to any new installations depicted in this sketch.
- K. PPL requires a local RS-485 or ethernet communication interface, also referred to as a communication port, to be open and accessible for the company owned DER management device (IEEE 1547-2018, sec. 10.1,4). Enclosure containing the communications interface shall include provisions for 120V or 277V power source, neutral, and grounding, either by way of providing safely terminated conductors or ensuring adequate space for use of insulating piercing connectors by the utility to tap existing conductors.
- L. Communication interface earmarked for utility use shall be configured to have a static IP address if using Modbus TCP (Ethernet) protocol, or a dynamic IP address (DHCP mode) if using IEEE 2030.5 protocol. For Modbus TCP: the static IP address, gateway IP address, and subnet mask IP address shall be provided to PPL Electric.
- M. Installations with multiple inverters shall be networked together by the customer per manufacturer guidelines or RS-485 multidrop networking. A communication network diagram depicting port availability and networking design shall be included with the system's interconnection application.
- N. For inverters where an additional module or kit is required to make the communication interface/port available, the module or kit must be included as part of the installed system. Reference PPL's approved smart inverter list for specific information.
- O. In the event of an outage or interruption due to equipment failure, weather, etc., any connected DER systems may be temporarily interrupted during the service restoration process.

* Reference: SKETCH 55a

REMSI_S057P1dwg

RULES FOR ELECTRIC METER AND SERVICE INSTALLATIONS PPL ELECTRIC UTILITIES CORPORATION	Rules: 12, 28 Date: 01/31/2025 Engr: JEU
--	---

© 2022 PPL Electric Utilities Corporation. All rights reserved. Printed on: 02/05/2025

Approved For Business Use
Approved By: 495 Bash, Christopher R