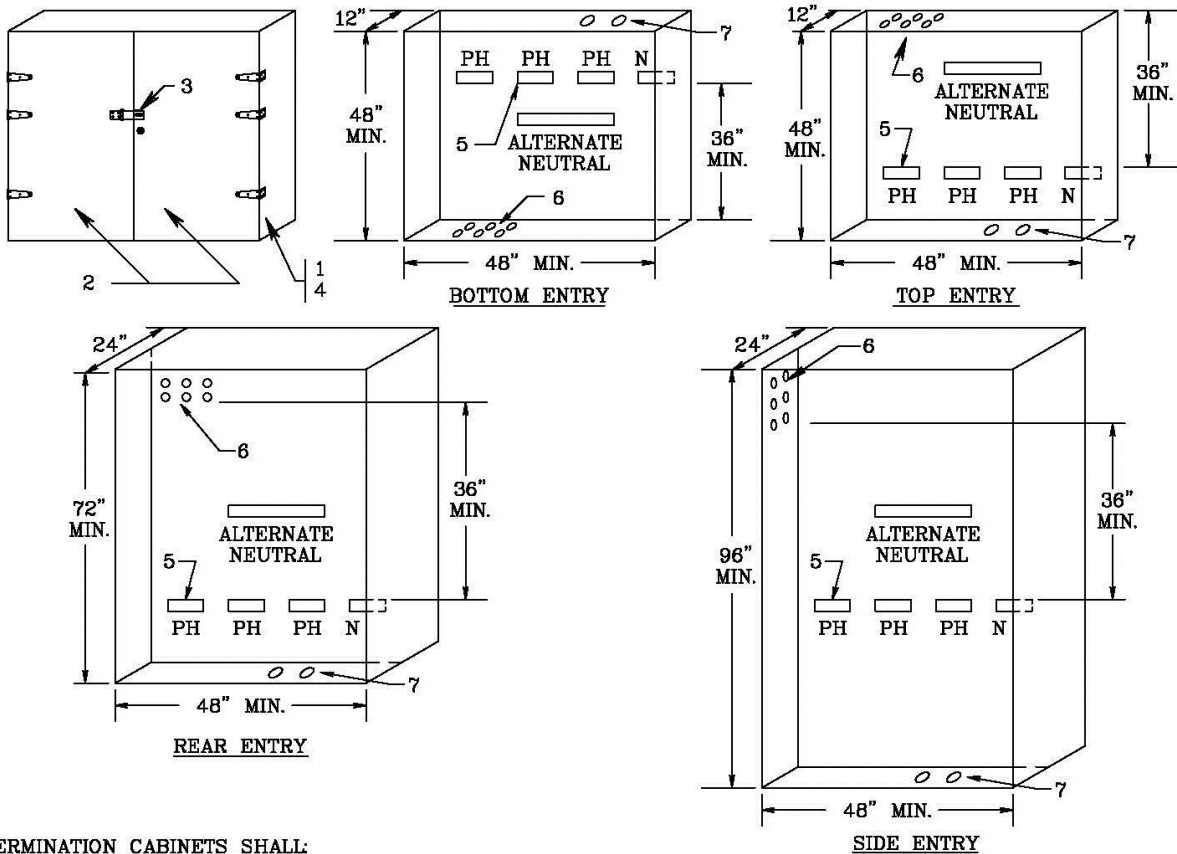




REMSI Sketches 51-100
Sketch #54
6-52

0000-000-ST-6052
 Custom ID: DCS 6-52
 Revision: 01
 Effective Date: 09/19/2016
 Page 6 of 58

Sketch #54 Termination cabinet, all service entries, single phase or three phase, 120/208 volts or 120/240 volts, with 2 to 6 sets of cable



TERMINATION CABINETS SHALL:

- 1 - BE CONSTRUCTED OF GALVANNEALED STEEL OR GALVANIZED STEEL WITH GRAY ENAMEL FINISH OR COLD ROLLED STEEL WITH A UL RECOGNIZED GRAY POWDER COAT FINISH - MINIMUM #14 GAUGE STEEL.
- 2 - HAVE TWO HINGED DOORS WITH INTERNAL STIFFENERS AND WIND LOCKS. HINGES AND HINGE PINS MUST BE NON-REMOVABLE.
- 3 - HAVE A HASP WHICH WILL ACCOMMODATE AT LEAST 1/4 INCH DIAMETER LOCK. A HANDLE KEY LOCK IS NOT ALLOWED.
- 4 - BE TAMPERPROOF AND, IF INSTALLED OUTDOORS, BE WEATHER RESISTANT AND RAIN-TIGHT.
- 5 - HAVE SETSCREW TYPE TERMINALS ACCEPTING UP TO 750 KCMIL CABLE. NUMBER OF TERMINALS PER PHASE AVAILABLE TO PPL SHALL EQUAL NUMBER OF SERVICE CONDUITS (INCLUDING ANY SPARES). IF COMPRESSION TYPE CABLE-TO-FLAT CONNECTORS SUPPLIED, THE LUGS FOR PPL MUST SHOW THE **BURNDY** DIE INDEX (SEE SKETCH 49). TERMINAL CLEARANCES: MINIMUM PHASE-TO-PHASE IS 2 INCHES, MINIMUM PHASE TO GROUND IS 1 INCH, MINIMUM PHASE TO CABINET IS 1.5 INCHES.
- 6 - GROUP SERVICE CONDUITS FOR PPL SERVICE CABLES. CONDUIT DIAMETERS ARE 3 OR 4 INCHES. CONDUIT TO PROTRUDE NOT MORE THAN 2 INCHES INTO THE CABINET.
- 7 - HAVE ADEQUATE CONDUITS FOR CUSTOMER'S CABLES TO DISCONNECT DEVICE.

NOTE: WIRES TO PPL TERMINALS AND WIRES TO CUSTOMER'S TERMINALS SHALL NOT INTERMINGLE. PPL CABLES AND TERMINALS MUST REMAIN ACCESSIBLE TO FACILITATE REPLACEMENT OF FAILED CABLES.

REFERENCE: CRS 6-19-100

RULES FOR ELECTRIC METER AND SERVICE INSTALLATIONS PPL ELECTRIC UTILITIES CORPORATION	Rules: 2, 5, 6, 12, 13, 15, 16, 21 Date: 7/18/16 Engr: NAP	<small>REMSI_S054_R1.dwg</small>
---	--	----------------------------------