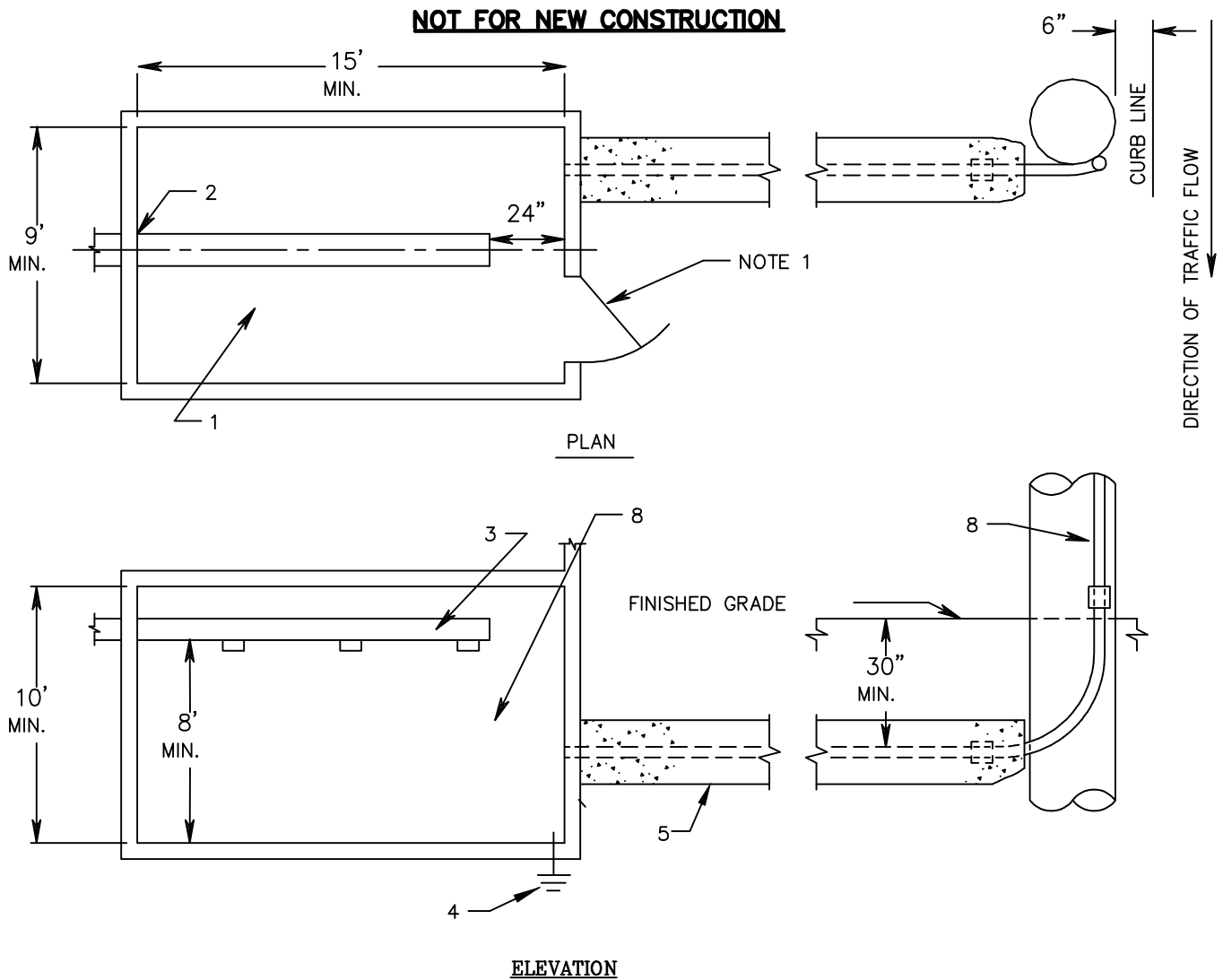


<u>VOLTAGE:</u> 1 Phase, 7,200V 3 Phase, 4 Wire WYE 7,200/12,470V	<u>SERVICE TYPE:</u> Overhead
<u>CUSTOMER LOAD:</u> 2.5 MVA Maximum	



\*REFERENCES: CRS 6-17-163, CRS 6-15-180

RULES FOR ELECTRIC METER AND SERVICE  
INSTALLATIONS  
**PPL ELECTRIC UTILITIES  
CORPORATION**

**Rules: 9**

REMSI\_S038.dwg

**Date:** 3/4/14 **Engr:** JCC

ELEVATION

CUSTOMER FURNISHES, INSTALLS/MAINTAINS:

- 1 - VAULT INCLUDING THE DOOR, LIGHTING SYSTEM, PROPER DRAINS, SCREENED VENTILATION OPENINGS AND REMOVABLE BARRIER.
- 2 - DUCT SEAL.
- 3 - SERVICE ENTRANCE BUS OR CABLES IN A TROUGH AND PROVIDES TERMINALS ON SERVICE ENTRANCE CONDUCTORS.
- 4 - VAULT GROUNDING SYSTEM PER CRS 6-17-163, SHEET 3.

CUSTOMER FURNISHES/INSTALLS:

- 5 - UNDERGROUND CONDUIT TO VAULT INCLUDING ELBOW AT BASE OF POLE. PPL EU SPECIFIES LOCATION AND FURNISHES CONSTRUCTION DRAWINGS OF CONDUIT FOR EACH LOCATION, UPON COMPLETION, OWNERSHIP OF ALL PHYSICAL FACILITIES INSTALLED BY CUSTOMER OUTSIDE OF BUILDING AND VAULT SHALL VEST IN PPL EU

PPL EU FURNISHES/ MAINTAINS, CUSTOMER INSTALLS:

- 6 - INSTRUMENT TRANSFORMERS.
- 7 - METER MOUNTING (PPL EU DESIGNATES LOCATION OUTSIDE OF VAULT).

PPL EU FURNISHES, INSTALLS/MAINTAINS:

- 8 - ALL ELECTRIC FACILITIES, INCLUDING TERMINAL POLE AND CONDUIT ON POLE.
- 9 - LEADS FROM TRANSFORMERS.

NOTES:

- 1 - 4 FOOT BY 7 FOOT MINIMUM SIZE DOOR OPENING TO ACCESS AREA SUITABLE FOR USE BY PPL EU TRUCKS OR MOBILE CRANES.

\*REFERENCES: CRS 6-17-163, CRS 6-15-180

RULES FOR ELECTRIC METER AND SERVICE  
INSTALLATIONS  
**PPL ELECTRIC UTILITIES  
CORPORATION**

**Rules:** 9

REMSI\_S038P2.dwg

**Date:** 3/4/14 **Engr:** JCC