

**Secondary Service Drop Attachment, Bus, & Instrument
Transformer Mounting on Customer's Building**
3 Phase, 4 Wire, 208Y/120 V or 480 Y/277 V or
3 Phase, 4 Wire, Delta 240/120 V: Greater than
2000 A up to 3000 A Maximum Capacity Rating
for Multi-Conduit Service Entrance

SKETCH #8B

SHEET 1

SKETCH #8B

SHEET 1

REQUIRES APPROVAL FROM SUPERVISOR - METERING SERVICES

**CUSTOMER FURNISHES,
INSTALLS, MAINTAINS:**

1. SERVICE ENTRANCE
SEE RULE 5.
2. 1-1/4 INCH
MINIMUM CONDUIT
AND FITTINGS
BETWEEN INSTRUMENT
TRANSFORMER AND
METER BASE.
SEE SKETCH 8C.
3. GROUND CLAMPS.
4. CABLE SUPPORT RACK.
5. LUG CONNECTORS.
SEE DETAIL A OR
ALTERNATIVE
CONNECTORS.

**PPL EU FURNISHES, MAINTAINS:
CUSTOMER INSTALLS:**

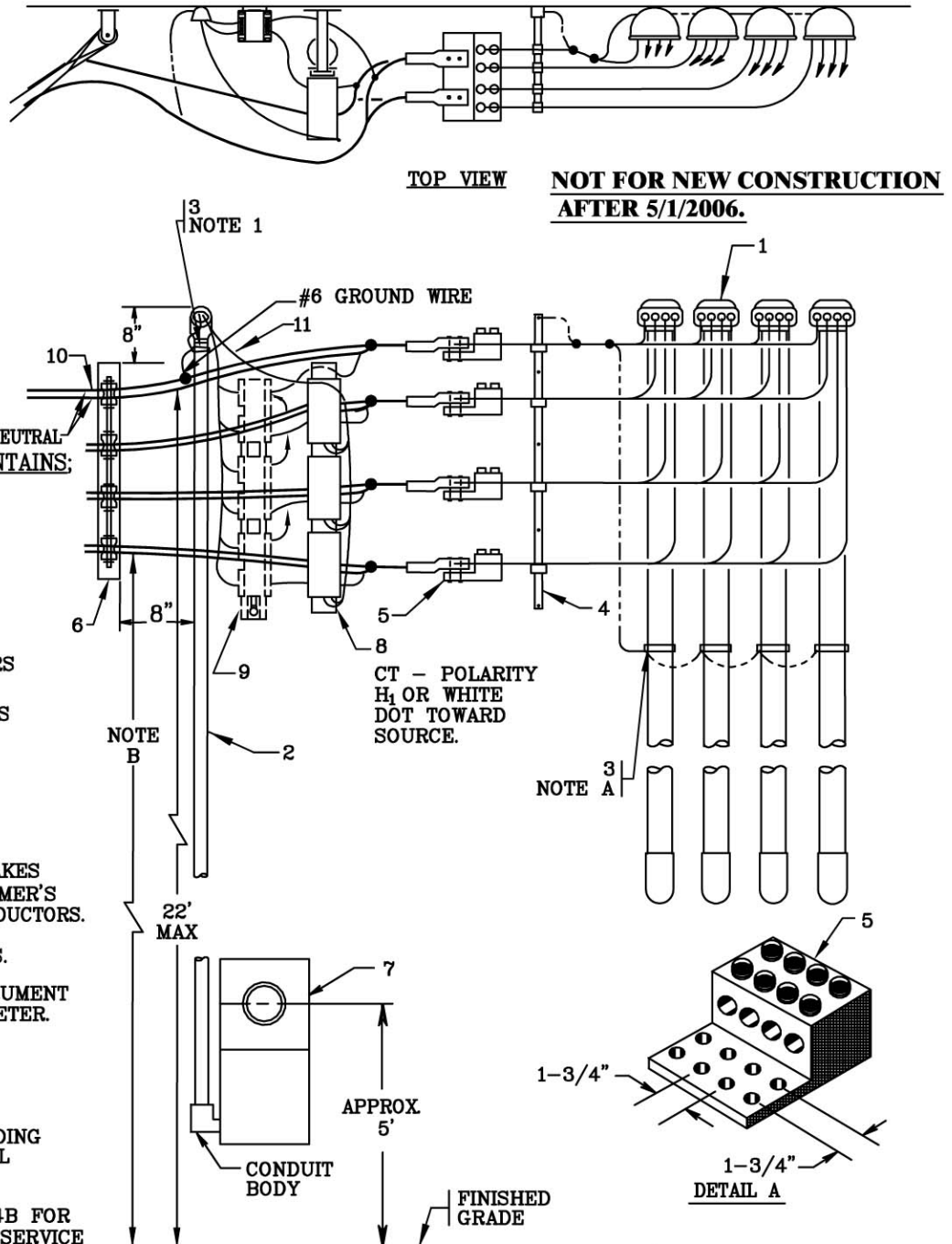
6. SERVICE RACK OR
BRACKET.
7. METER BASE -
LOCATION DESIGNATED
BY PPL EU SEE
SKETCH 8C.
8. CURRENT TRANSFORMERS
& MOUNTING.
9. VOLTAGE TRANSFORMERS
& MOUNTING.

**PPL EU FURNISHES,
INSTALLS, MAINTAINS:**

10. SERVICE DROP AND MAKES
CONNECTION TO CUSTOMER'S
SERVICE ENTRANCE CONDUCTORS.
MAXIMUM TENSION PER
CONDUCTOR - 800 LBS.
11. WIRING BETWEEN INSTRUMENT
TRANSFORMERS AND METER.

NOTES:

- A. PPL EU MAKES GROUNDING
CONNECTION FOR METAL
CONDUIT.
- B. SEE RULE 4, 4A AND 4B FOR
MINIMUM HEIGHT AND SERVICE
DROP CLEARANCE.



SKETCH 8C, SKETCH 49, REFERENCE PICTURE B

**RULES FOR ELECTRIC METER AND SERVICE
INSTALLATIONS
PPL ELECTRIC UTILITIES
CORPORATION**

Rules: 4, 4A, 4B, 5, 15

Date: 09/17/08 **Engr:** MDB