



Energy costs are rising. Shop for the rate that's right for you.

We want to help you keep your bills as low as possible.

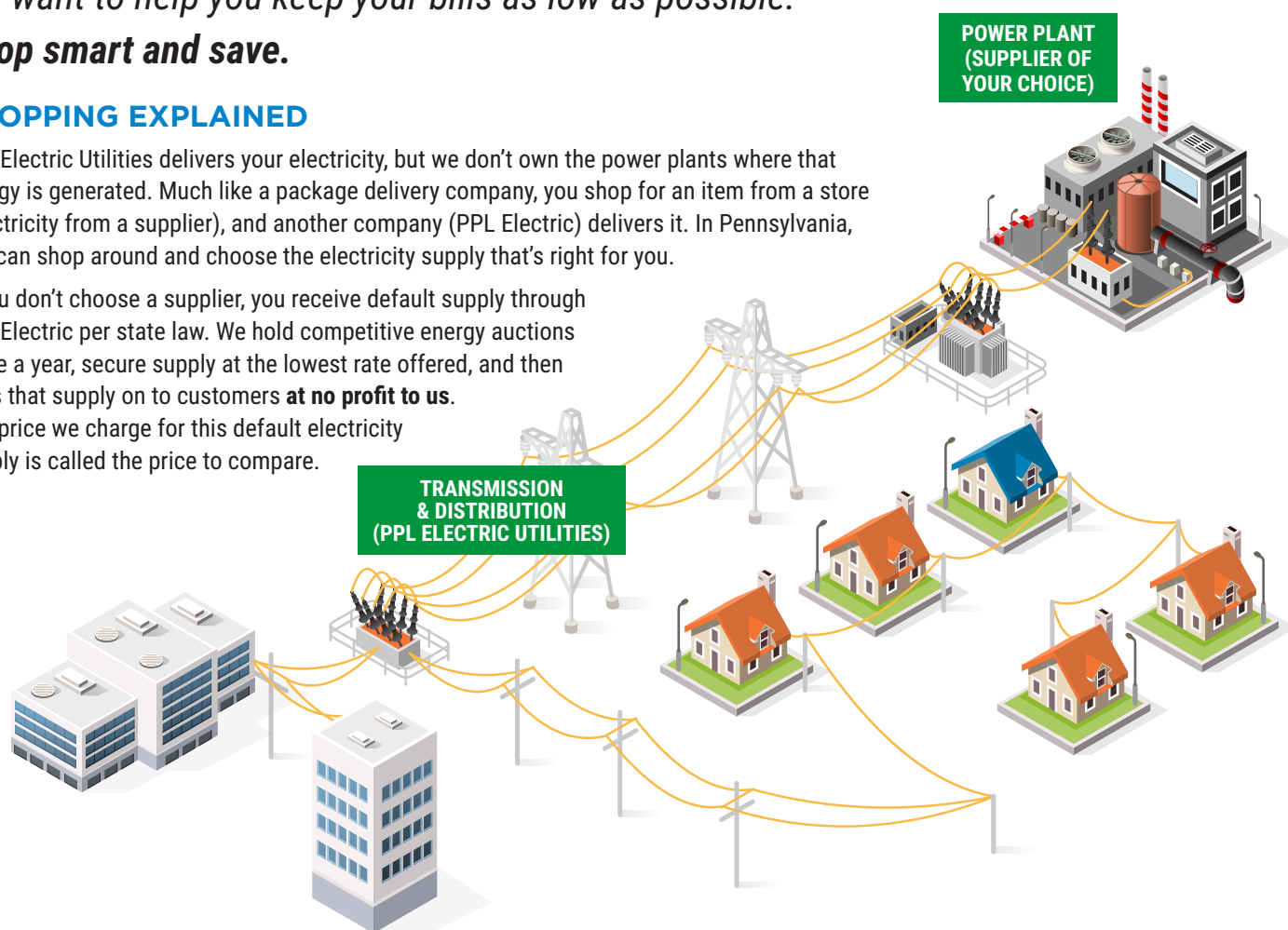
Shop smart and save.

SHOPPING EXPLAINED

PPL Electric Utilities delivers your electricity, but we don't own the power plants where that energy is generated. Much like a package delivery company, you shop for an item from a store (electricity from a supplier), and another company (PPL Electric) delivers it. In Pennsylvania, you can shop around and choose the electricity supply that's right for you.

If you don't choose a supplier, you receive default supply through PPL Electric per state law. We hold competitive energy auctions twice a year, secure supply at the lowest rate offered, and then pass that supply on to customers **at no profit to us.**

The price we charge for this default electricity supply is called the price to compare.





We've noticed that the prices of many energy supply sources are on the rise due to a variety of external market conditions, including overall inflation.

SHOPPING GUIDE

Do your homework before you shop.

1 Review the price to compare (also known as the PPL Electric default rate).

Price to Compare effective December 1, 2021	
 \$.09502/kWh Residential	 \$.10285/kWh Business

Use the price to compare as a reference point when comparing available options.

2 Check your current rate and consider shopping around for a better deal.

Our bill makes it easy to check the rate you're paying for electricity.

You can also view your rate on the Account Summary page of your online profile.

On your paper bill	On ppelectric.com
<p>Supply \$29.88 Usage from Jan 5 - Feb 4</p> <p>Planet Energy (PA) Rate Effective 6/26/20 1-XXX-XXX-XXXX</p> <p>ENERGY CHARGE 493.00KWH @ \$0.060600 PER KWH</p> <p>PPL Electric Utilities Price to Compare \$.09502/kWh Use this price when comparing supplier offers.</p> <p>SHOP FOR ELECTRICITY Visit PPowerSwitch.com or www.oca.state.pa.us If you're shopping, know your contract expiration date. Account Number: XXXX-XXXX The price to compare is updated June 1st and December 1st. Rate: RS. View schedule at ppelectric.com/rates</p>	<p>Electricity Supplier ABC Energy 844-123-4567 Shop Rates ></p> <p>Supplier Rate 5.800¢/kWh View Supplier Activity ></p> <p>PPL Price to Compare* \$.09502/kWh Valid until May 31, 2022 Update Privacy Settings ></p> <p><small>*PPL's Price to Compare is the rate customers pay if they don't shop suppliers. It is based on PPL buying electricity on the supplier market and passing the price to customers without markup.</small></p>

3 Prepare a list of questions. Know what to ask and what to look out for.



Beware of variable rates!

- Sometimes suppliers offer introductory offers or special incentives. Know if you're on a fixed or variable rate. Make sure your rate doesn't increase significantly at some point in the future. Variable rates often start low and then increase depending on the price of power.
- Make sure you understand when your contract ends and determine if there are any cancellation fees of which you need to be aware.
- Compare your supply rates often so you can stay on the lookout for the best rate possible.
- Know how to spot a scam. If an offer seems too good to be true, it probably is.

Shop around for an electricity supplier that can offer you a better rate.

- Visit papowerswitch.com to compare available offers.
- Choose the supplier that offers the service, energy source and price that's right for you. Once you sign up, they'll notify us to make the switch.

Our online resources can help guide you through the process.

Visit ppelectric.com/shopsmart to get started.

